



Track assets more efficiently

**Fully customisable RFID labels fit for
any surface**

Track assets and manage inventories more efficiently in complex industrial environments with fully customisable RFID labels that can fit any surface. Let us design the optimal RFID labelling solution for you to scan, identify and locate multiple items at once from a distance, and/or 1 by 1 in close proximity.

- fully customise RFID labels including antennas, chips, sensor, label material, adhesive and print
- ideal to identify on- or off-metal surfaces from a distance and/or up close with UHF or NFC, or dual frequency UHF & NFC RFID
- program, print, apply and capture identification signals on-site with RFID printers and scanners

Track & Trace RFID Labels

Label reference	THT-UHF-B481-24x16	THT-UHF-B7425-45x30	THT-UHF-B7425-53x26	THT-UHF-B423-53x26	THT-HF-B423-25x43	THT-UHF-PET-64x6	THT-NFC-PET-25x25	THT-UHF/HF-B423-66x46	THT-UHF/HF-B423-33x17	THT-UHF-B7425-65x6-0.5
Article number	309083	309082	309081	307923	311514	309087	309086	310251	310250	312403
RFID type	UHF	UHF	UHF	UHF	HF	UHF	NFC	NFC + UHF	NFC + UHF	UHF
Markets	Laboratory	General Laboratory Manufacturing Healthcare	General Laboratory Manufacturing Healthcare Transport & Logistics	General Manufacturing Healthcare Transport & Logistics	General Manufacturing Transport & Logistics	General Manufacturing Healthcare Data/Telecom	General Manufacturing Healthcare Data/Telecom	General Laboratory Manufacturing Healthcare Data/Telecom Transport & Logistics	General Laboratory Manufacturing Healthcare Data/Telecom Transport & Logistics	General Laboratory Healthcare
Application	Medical slide labelling	Product ID & Product life cycle ID Specimen & Laboratory labelling Large conical bottles, tubes and well plates	Product ID & Product life cycle ID Specimen & Laboratory labelling Large conical bottles, tubes and well plates Medical equipment ID Distribution & Warehousing	Product ID & Product life cycle ID Medical equipment ID Distribution & Warehousing	Product ID & Product life cycle ID Product Authentication Supply-chain management	Product ID & Product life cycle ID Medical equipment ID Distribution & Warehousing	Product ID & Product life cycle ID	Product ID & Product life cycle ID Specimen & Laboratory labelling Medical equipment ID Distribution & Warehousing	Product ID & Product life cycle ID Specimen & Laboratory labelling Medical equipment ID Distribution & Warehousing	Laboratory labelling
On-metal application	No	No	No	No	No	Yes	Yes	No	No	No
Quantity/roll	500	500	500	500	500	500	500	500	500	500
Dimensions	24 x 16mm	45 x 30mm	53 x 26mm	53 x 26mm	25 x 43mm	64 x 6mm	25 x 25mm	66 x 46mm	33 x 17mm	65 x 6mm
Face material	Polyester (B-481)	Polypropylene (B-7425)	Polypropylene (B-7425)	Polyester (B-423)	Polyester (B-423)	Polyester	Polyester	Polyester (B-423)	Polyester (B-423)	Polypropylene (B-7425)
Material reference	L-2899-4C	L-2588-19A	L-2588-26B	L-2588-26C	L-2588-31B	L-2588-27C	L-2588-25B	L-2588-27C	L-2588-27D	L-2588-35C
Read range	Up to 2m	Up to 6m	Up to 10m	Up to 11m	Up to 2cm	Up to 3m	Up to 2cm	Up to 5m (UHF) Up to 2cm (NFC)	Up to 2.8m (UHF) Up to 2cm (NFC)	Up to 1m
EPC memory	128 bits	448 bits	128 bits	128 bits	/	128 bits	/	128 bits	480 bits	128 bits
User memory	512 bits	2048 bits	/	/	2560 bits	/	144 bytes	160 bits (UHF) 1920 bits (NFC)	2048 bits (UHF, HF)	/
Operating temperature	-40 °C to 85 °C	-40 °C to 85 °C	-40 °C to 85 °C	-40 °C to 85 °C	-40 °C to 85 °C	-40 °C to 85 °C	-35 °C to 85 °C	-40 °C to 85 °C	-40 °C to 85 °C	-40 °C to 85 °C

All standard RFID labels are fully customisable, including antennas, chips, sensor, label material, adhesive and print.



Sensing RFID Labels

Sensing type	Temperature sensing			Moisture sensing	LED sensing
Label reference	THT-UHF-B423-93x26	THT-NFC-B423-50x40	THT-NFC-B423-42x42	THT-UHF-B423-42x85	THT-UHF-B430-99x7-0.1
Article number	309085	309084	311137	311513	312401
RFID type	UHF	NFC	NFC	UHF	UHF
Markets	General Manufacturing Warehousing Healthcare	General Manufacturing	General Manufacturing	General Manufacturing Construction Transport & Logistics	Transport & logistics Warehousing
Application	Temperature monitoring	Temperature monitoring	Temperature monitoring	Moisture sensing Leak detection Water proofing	RFID labelling General identification Asset tracking
On-metal application	No	No	Yes	No	No
Quantity/roll	100	100	100	100	100
Dimensions	93 x 26mm	50 x 40mm	42 x 42mm	42 x 85mm	99 x 7mm
Face material	Polyester (B-423)	Polyester (B-423)	Polyester (B-423)	Polyester (B-423)	Polyester (B-430)
Material reference	L-2899-8A	L-2899-7B	L-2588-31B	L-2588-32A	L-2588-35A
Read range	Up to 9m	Up to 5cm	Up to 5cm	Up to 2.7m	Up to 15.5m
EPC memory	128 bits	/	/	96 bits	160 bits
User memory	176 bits	320 bytes	320 bytes	2000 bits	1312 bits
Operating temperature	-40 °C to 85 °C	-40 °C to 85 °C	-40 °C to 85 °C	-40 °C to 85 °C	-40 °C to 85 °C

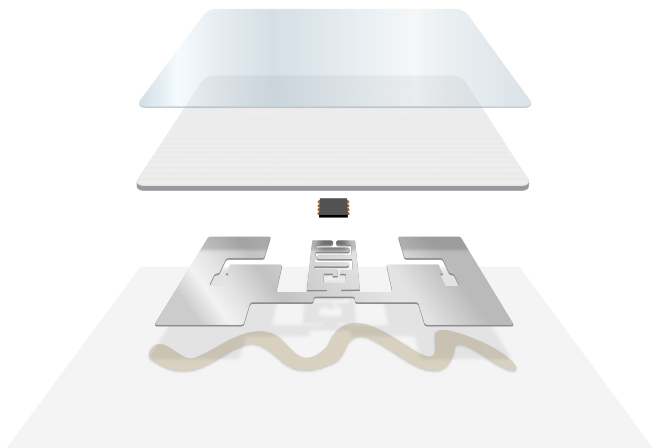
All standard RFID labels are fully customisable, including antennas, chips, sensor, label material, adhesive and print.



RFID labels tailored to your environment

We will support you in selecting the optimal custom RFID label construction for your application, in your environment.

1. **Printable surface:** Can present your logo, text, serial number or any print on a gloss or matt finish.
2. **Label material:** Perfectly fits the surface of the items you need to identify and can be supplied in a wide range of shapes and substrates.
3. **Optional sensor:** An optional, high performance sensor to capture relevant data such as temperature or moisture levels.
4. **RFID inlay:** A selection of high performance RFID antennas and chips based on your read range and memory requirements
5. **Adhesive:** Selected to stay attached in your application.
6. **Label liner:** Optimally presents your label for application. Brady leverages all of its knowledge and capabilities to provide you with a unique solution that optimally fits your needs.



A complete solution

- **RFID labels:** Custom shaped, printed and programmed and ready to apply or ready to be finalised at your premises.
- **Print at your premises:** Programme, print, serialise or finalise custom RFID labels at your premises.
- **Capture data:** Capture data from or add data to your RFID labels from a few centimetres in HF/NFC up to 16 metres in UHF, not limited by line of sight.
- **Integrate & automate:** Automatically capture data from your RFID labels at programmable intervals with fixed scanners, and send the data to your ERP-system.