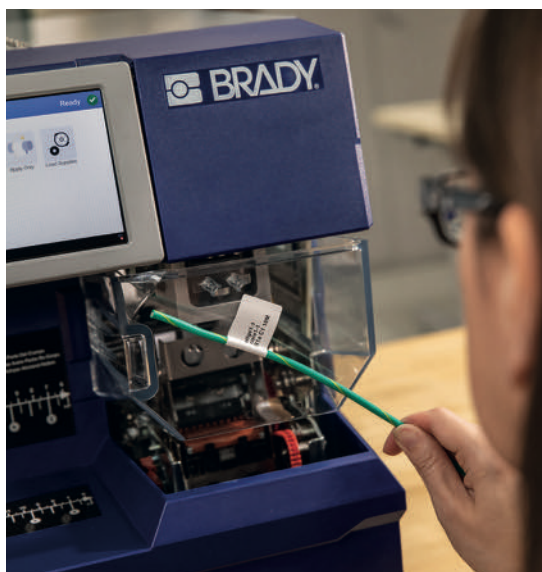




Automated cable identification

Increase production output

Automate your identification



If you're still using old technology, the time to get work done seems to disappear. Old processes slow you down, rework creates bottlenecks and errors can bring things to a full stop. Help keep things running smoothly by automating your identification.

Brady offers a family of print-and-apply machines that take the manual labelling process out of your hands so you can move through your work more efficiently and with less rework. With these modern automated machines, you can:

- **Increase productivity** - cut labelling time in half to keep your output numbers high
- **Reduce errors** - get sustainable, consistent identification without the rework
- **Make changes fast** - intuitive full-colour touchscreen and user interface make changing settings easy

Choose your solution

Wraptrac A6500 Wrap Printer Applicator

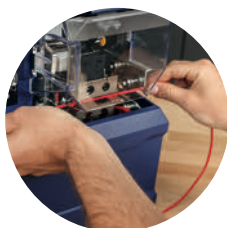
- Print and apply self-laminating labels in five seconds
- Automate time-consuming labelling tasks
- Identify wires from 1.524 mm to 15.24 mm diameter

Wraptrac A6200 Wrap Printer Applicator

- Speed up production in cellular manufacturing
- Easy to transport, set up and operate
- Compact design fits well at workstations

BradyPrinter A5500 Flag Printer Applicator

- Print and apply flags in five seconds
- Boost productivity with automated labelling
- Apply flag labels free of wrinkles, skew and edge mismatch



**AUTOMATED PRINT
AND APPLY**



**SPECIALISED HIGH
QUALITY IDENTIFICATION**



SOFTWARE



**SUPPORT AND
SERVICES**

Automated cable identification

Wrap-around labels

For cellular manufacturing and process-driven assembly, workstation flexibility is key to improving workflows. Here's your opportunity to finally get what you need. Designed to increase efficiency, the **Wraptor A6200 Wrap Printer Applicator**:

- fits into tight spaces
- can be moved easily
- prints and wraps wires in 7 seconds

This makes the Wraptor A6200 a high-value, labour-saving solution that's automated - and affordable.



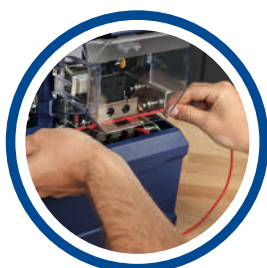
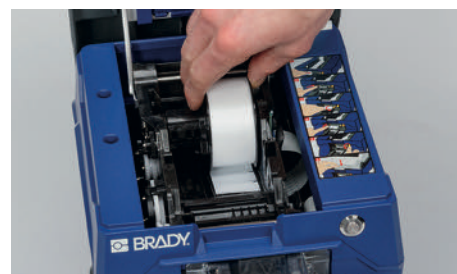
Product Specifications on page 7

| Article No. | Description |
|-------------|--|
| 151628 | BradyPrinter Wraptor™ A6200 Wrap Printer Applicator and Rewinder Kit WIFI - EMEA |
| 151627 | BradyPrinter Wraptor™ A6200 Wrap Printer Applicator and Rewinder Kit WIFI - NA |
| 151626 | Rewinder for BradyPrinter Wraptor™ A6200 Wrap Printer Applicator |
| 151625 | BradyPrinter Wraptor™ A6200 Wrap Printer Applicator - EMEA |
| 151624 | BradyPrinter Wraptor™ A6200 Wrap Printer Applicator WIFI - EMEA |
| 151623 | BradyPrinter Wraptor™ A6200 Wrap Printer Applicator - NA |
| 151622 | BradyPrinter Wraptor™ A6200 Wrap Printer Applicator WIFI - NA |



Wraptor A6200 Rewinder

Keep your workspace tidy with the Wraptor A6200 Rewinder. It captures used liner and neatly stores it with a space-saving design. Rewinds used material liner, keeping work area free of debris. Seamlessly couples with the Wraptor A6200 Wrap Printer Applicator.



AUTOMATED PRINT AND APPLY



SPECIALISED HIGH QUALITY IDENTIFICATION



SOFTWARE



SUPPORT AND SERVICES

Automated cable identification

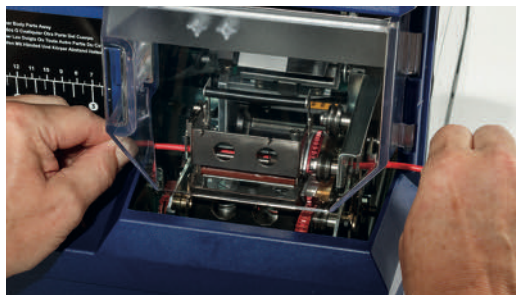


Wrap-around labels

The **Wraptor A6500 Wrap Printer Applicator** can significantly increase production output by identifying cables with wrap-around labels in 5 seconds. It automatically prints and applies the label on a wide range of insertable cables, saving up to 10 seconds per identified cable.

The Wraptor A6500 Wrap Printer Applicator:


- can greatly increase production output by printing and applying wrap-around cable labels in 5 seconds
- is easy to operate because it can identify a wide range of cables between 1.52 mm and 15.24 mm diameter via a modern user interface with full colour touch screen
- is easy to implement in a variety of production environments thanks to USB ports and ethernet connectivity
- can be used with Brady Workstation apps to design, print and apply a wide range of labels
- allows saving and processing commonly used labels
- can be integrated with Schleuniger Cut & Strip Machines



i Product Specifications on page 7

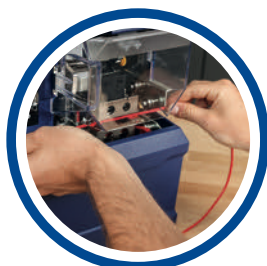
| Article No. | Description |
|-------------|--|
| 149242 | Wraptor A6500 Wire ID Printer Applicator - US |
| 149244 | Wraptor A6500 Wire ID Printer Applicator - EU/UK |

i



Calculate what you could save by applying labels with the Wraptor A6500!

Click or scan the QR-code



AUTOMATED PRINT AND APPLY



SPECIALISED HIGH QUALITY IDENTIFICATION



SOFTWARE



SUPPORT AND SERVICES

Automated cable identification

Flag labels

The **BradyPrinter A5500 Flag Printer Applicator**:

- can help save money by eliminating the need to print labels in advance and the time needed to apply them by hand
- can increase production output by sustainably printing and applying flag labels in 5 seconds
- can identify a wide range of cables via a modern user interface with full colour touch screen
- is easy to implement in production environments with USB ports and ethernet connectivity

Experienced operators can print and manually apply a flag label on a cable in 15 seconds. With the BradyPrinter A5500 Flag Printer Applicator they can significantly increase production output by flagging cables in 5 seconds.

Increase production output and save money

The BradyPrinter A5500 helps increase production output and enhance identification quality by automatically printing and applying flag labels.

It can save quite a lot of money by identifying cables in 5 seconds and by eliminating the need to print labels in advance and the time needed to apply them by hand. The BradyPrinter A5500 enables 300 dpi prints for barcodes, logos and diagrams, and applies reliable cable flags that can communicate a lot of information.

A wide range of cables

The BradyPrinter A5500 is very flexible and, without any adjustment, can identify cables with 1.52 mm up to 15.24 mm in diameter and apply labels with widths up to 50.8 mm and lengths between 19.05 mm and 76.20 mm. Its full colour touch screen and modern user interface further enhance the printer's flexibility and ease of use.

Easy to implement

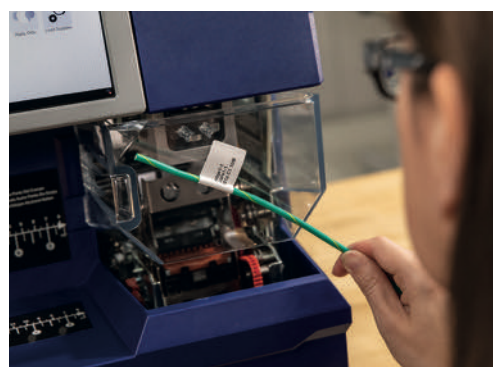
USB-ports and ethernet connectivity make the BradyPrinter A5500 practical to implement in a variety of production environments.

Coupled with Brady Workstation apps for easy flag label design, barcoding and serialisation, the BradyPrinter A5500 becomes a highly practical process efficiency increaser.



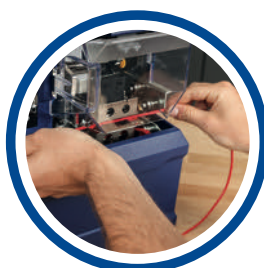
Product Specifications on page 8

| Article No. | Description |
|-------------|--|
| 151187 | BradyPrinter A5500 Flag Printer Applicator - EMEA |
| 151186 | BradyPrinter A5500 Flag Printer Applicator WIFI - EMEA |
| 151185 | BradyPrinter A5500 Flag Printer Applicator - US |
| 151184 | BradyPrinter A5500 Flag Printer Applicator WIFI - US |



Calculate what you could save by applying labels with the BradyPrinter A5500!

Click or scan the QR-code



AUTOMATED PRINT AND APPLY



SPECIALISED HIGH QUALITY IDENTIFICATION



SOFTWARE



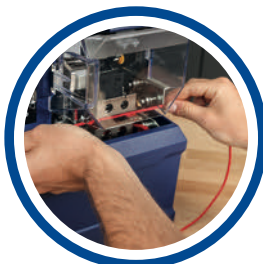
SUPPORT AND SERVICES

Wrap printer applicators

Wraptor A6200 Wrap Printer Applicator/ Wraptor A6500 Wrap Printer Applicator Specifications



| Printer | Wraptor A6200 Wrap Printer Applicator | Wraptor A6500 Wrap Printer Applicator |
|--|---|---|
| Applications | Data and telecommunications labelling, Electrical labelling, Wire and cable labelling | Data and telecommunications labelling, Electrical labelling, Wire and cable labelling |
| Includes | (Printer Applicator (A6200), Brady Workstation Product and Wire ID Software Suite (Digital Download Leaflet), Printer Ribbon 2 x 150ft (A62-R4300), Roll of Vinyl Clear/White Labels (A62-3-427), USB Cable, Quick Start Guide, Power Cord and AC Adapter | Wraptor™ A6500 Wire ID Printer Applicator, including Brady Workstation Product and Wire ID label design and printing software, Wraptor™ print driver, USB cable, power cord, roll of WRAP-4-427 and roll of R-4302 ribbon |
| Weight (kg) | 4.08 | 38.50 |
| Width x Height x Depth (mm) | 222.86 x 211.38 x 297.56 | 368.30 x 450.90 x 571.50 |
| Internal Memory | 32 GB - Memory expandable through USB | 32 GB - Memory expandable through USB |
| Display | Colour LCD Touchscreen | Colour Touchscreen |
| Colour Capability | Monocolour | Monocolour |
| Print Resolution (dpi) | 300 | 300 |
| Print Speed (mm/sec) | 38.10 | 76.00 |
| Print Technology | Thermal Transfer | Thermal Transfer |
| Warranty | 1 year | 1 year |
| Materials supported | | |
| Materials Supported | B-427, B-499 | B427, B499, B472, B417 |
| Min. Label Width (mm) | 12.70 | 12.70 |
| Max. Label Width (mm) | 25.40 | 50.80 |
| Max. Print Width (mm) | 25.40 | 50.80 |
| Min. Wire Diameter (mm) | 1.524 | 1.52 |
| Max. Wire Diameter (mm) | 6.35 | 15.24 |
| Recommended Usage per Day | 3000 | 7000 |
| Hours of Operation | 8 hours/5 days | 24 hours/7 days |
| Fonts/graphics/symbologies | | |
| Bar Code Type | 2D and 1D (Linear) | 2D and 1D (Linear) |
| Software & connectivity | | |
| Connectivity Options | Ethernet, USB, Wi-Fi | Ethernet, USB, Wi-Fi |
| Software Compatibility | Brady Workstation, Windows based driver for 3rd party software use | Brady Workstation, LabelMark |
| Stand-alone Printing (Detached from PC) | Stand-alone & Peripheral | Stand-alone & Peripheral |
| Power supply | | |
| Battery Type | Lithium-manganese Battery | Lithium-manganese Battery |
| Power Requirements | 90-264V, 47-63 Hz | 90-264V, 47-63 Hz |



**AUTOMATED PRINT
AND APPLY**



**SPECIALISED HIGH
QUALITY IDENTIFICATION**



SOFTWARE



**SUPPORT AND
SERVICES**

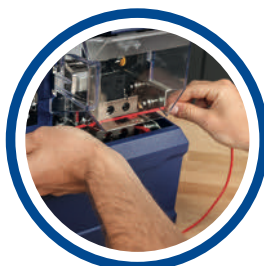
Flag printer applicators



BradyPrinter A5500 Flag Label Printer Applicator Specifications

| Printer | |
|----------------------------|---|
| Applications | Cable & wire identification |
| Includes | BradyPrinter A5500 Flag Printer Applicator, Brady Workstation Product and Wire ID Suite, A5500 print driver, USB Cable, power cord, roll of A55-4-483, roll of SSR6002 ribbon |
| Weight (kg) | 34 |
| Size W x H x D (mm) | 383.54 x 452.12 x 604.52 |
| Internal Memory | 32 GB - Memory expandable through USB |
| Display | Colour Touchscreen |
| Colour Capability | Monocolour |
| Print Resolution (dpi) | 300 |
| Print Speed (mm/sec) | 76.20 |
| Print Technology | Thermal Transfer |
| Warranty | 1 year |
| Materials supported | |
| Materials Supported | B-483 |
| Min. Label Width (mm) | 25.40 |
| Max. Label Width (mm) | 50.80 |
| Max. Print Width (mm) | 50.80 |
| Max. Print Length (mm) | 101.60 |
| Min. Wire Diameter (mm) | 1.524 |
| Max. Wire Diameter (mm) | 15.24 |
| Recommended Usage per Day | 7000 |
| Hours of Operation | 24 hours/7 days |
| Fonts/graphics/symbologies | |
| Bar Code Type | 2D and 1D (Linear) |
| Built-in Fonts | Arial Arial 65 Courier New Tahoma Times New Roman |

| Software & connectivity | |
|---|--|
| Connectivity Options | Ethernet USB WiFi |
| Software Compatibility | Brady Workstation |
| Stand-alone Printing (Detached from PC) | Stand-alone & Peripheral |
| Power supply | |
| Battery Type | Lithium-Manganese Battery |
| Power Requirements | 100-240 V @ 50-60 Hz |
| Compliance | |
| Approval/Compliance | CE 2014/35/EU LVD, 2014/30/EU EMCD, 2011/65/EU, 2015/863/EU; UL 60950-1, 2nd Edition; EN \ IEC 60950-1:2006 + A11:2009 + A1:2010 + A12:2011+ A2:2013; WEEE; RoHS |



AUTOMATED PRINT AND APPLY



SPECIALISED HIGH QUALITY IDENTIFICATION

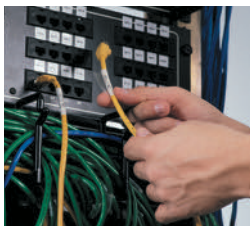
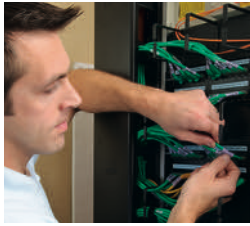


SOFTWARE



SUPPORT AND SERVICES

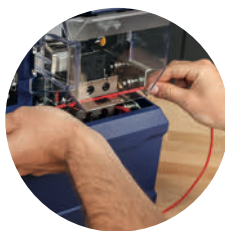
Durable auto-apply cable labels



Auto-apply cable wraps

Brady's wrap around cable labels offer excellent print quality, high resistances versus extreme temperatures, chemicals and fuels and a good fading and abrasion resistance.

- Self-laminating vinyl cable labels (B-427) have a durable translucent vinyl film with an acrylic pressure sensitive adhesive. The labels are equipped with a white (or other colour options) thermal transfer printable zone and a transparent overlaminating area, which wraps around the label to protect the text from fading and abrasion.
- Polyamide coated nylon cloth (B-499) suitable for wiremarking and general labelling applications. This material meets the halogen free requirements as per the DIN norm.
- Flame retardant cable wrap labels (B-472) are self-extinguishing and prevent flames from propagating. Their special topcoat enables crystal clear THT print quality and excellent chemical resistance. These labels are ideal for high temperature applications.



**AUTOMATED PRINT
AND APPLY**



**SPECIALISED HIGH
QUALITY IDENTIFICATION**



SOFTWARE



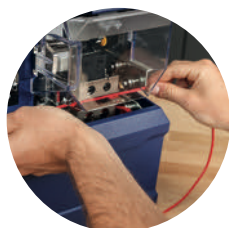
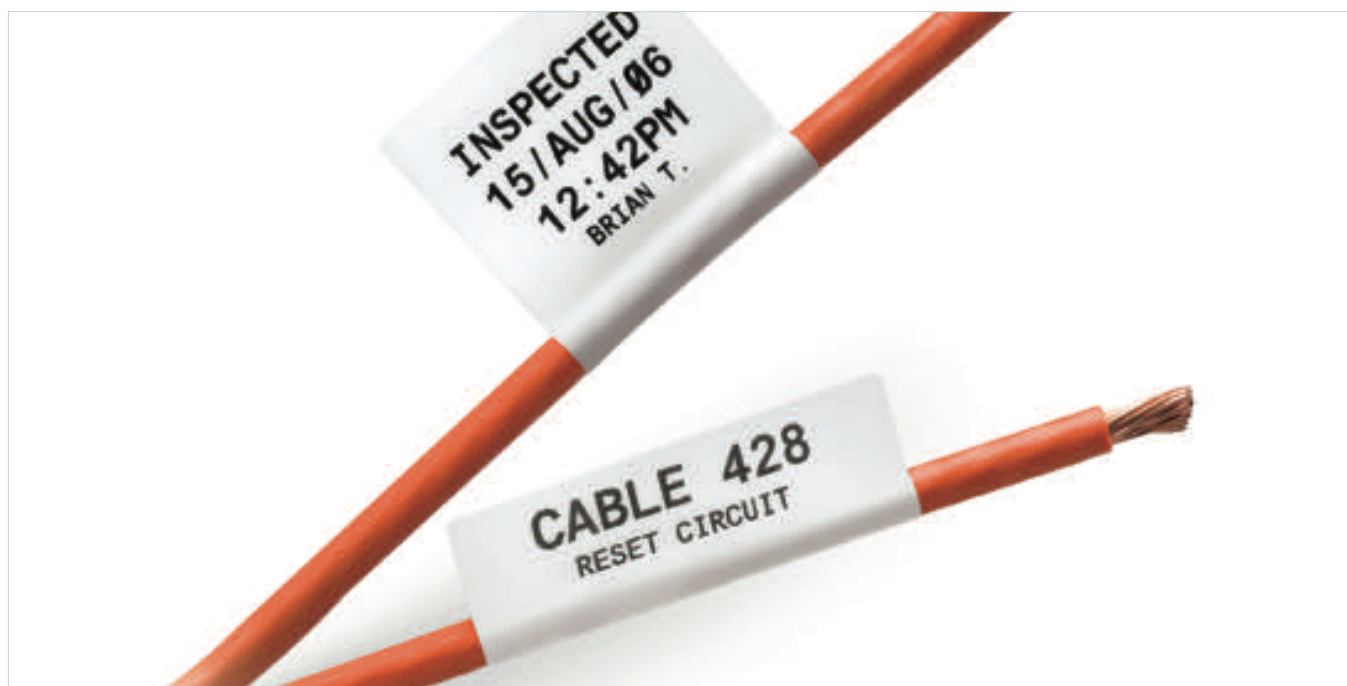
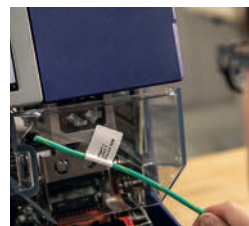
**SUPPORT AND
SERVICES**

Durable auto-apply cable labels

Auto-apply cable flags

Cable Flag Labels are an excellent identification solution when more information or a barcode is needed to properly identify a cable or wire.

The B-483 polyester cable label with rubber based adhesive and glossy finish is designed for high adhesion and is available in white.



AUTOMATED PRINT AND APPLY



SPECIALISED HIGH QUALITY IDENTIFICATION



SOFTWARE



SUPPORT AND SERVICES

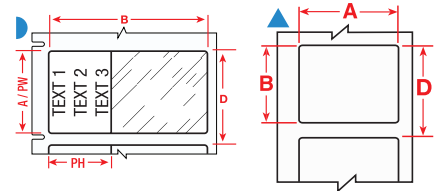
Printer materials

The following part numbers are specially designed for use with the **Wraptor A6200 Wrap Printer Applicator** printer only.



Self-Laminating Vinyl Wire and Cable Labels

Self-Laminating Vinyl (B-427) is an excellent material for wire and cable identification. This material has good clarity, conformability and is self-extinguishing. Provided in a self-laminated format with a white printable zone and translucent overlaminating area to protect text. Durable, permanent acrylic adhesive has outstanding water and oil resistance.



| Diagram | Order Article No. | Order Reference | Colour | Label Width A (mm) | Label Height B (mm) | Printable Area Width PW (mm) | Printable Area Height PH (mm) | Vertical Repeat D (mm) | Min. Wire Diameter (mm) | Max. Wire Diameter (mm) | Labels per Roll | Printer Ribbon Series |
|-------------------------------------|-------------------|-----------------|-------------------|--------------------|---------------------|------------------------------|-------------------------------|------------------------|-------------------------|-------------------------|-----------------|-----------------------|
| B-427: Self-laminating Vinyl | | | | | | | | | | | | |
| ▶ | 151007 | A62-1-427 | White/Transparent | 12.70 | 19.05 | 12.70 | 9.53 | 22.23 | 1.52 | 3.05 | 850 | R4300 |
| ▶ | 151008 | A62-14-427 | White/Transparent | 12.70 | 31.75 | 12.70 | 12.70 | 34.93 | 3.05 | 6.10 | 500 | R4300 |
| ▶ | 151009 | A62-15-427 | White/Transparent | 25.40 | 19.05 | 25.40 | 9.53 | 22.23 | 1.52 | 3.05 | 850 | R4300 |
| ▶ | 151010 | A62-3-427 | White/Transparent | 25.40 | 31.75 | 25.40 | 12.70 | 34.93 | 3.05 | 6.10 | 500 | R4300 |
| B-499: Nylon Cloth | | | | | | | | | | | | |
| ▲ | 151011 | A62-7-499 | White | 12.70 | 19.05 | – | – | 22.23 | 1.52 | 6.10 | 600 | R4300 |
| ▲ | 151012 | A62-16-499 | White | 12.70 | 25.40 | – | – | 28.58 | 3.30 | 6.35 | 450 | R4300 |
| ▲ | 151013 | A62-15-499 | White | 25.40 | 19.05 | – | – | 22.23 | 1.52 | 6.10 | 600 | R4300 |
| ▲ | 151014 | A62-13-499 | White | 25.40 | 25.40 | – | – | 28.58 | 3.30 | 6.35 | 450 | R4300 |

Ribbon

| Article No. | Order Reference | Width (mm) | Description |
|-------------|-----------------|------------|-----------------------------------|
| 151629 | A62-R4300 | 50.00 | A6200 R4300 Series Printer Ribbon |



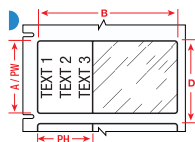
Printer materials



The following part numbers beginning with “WRAP” are specially designed for use with the **Wraprator A6500 Wrap Printer Applicator** only.

Self-laminating Vinyl

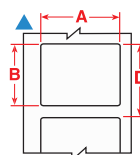
Brady’s most popular wire and cable marker. Self-laminating vinyl features white printable area with a clear “tail” that wraps around marker. Tail serves as overlamine to protect the print. Superior resistance to abrasion, solvents, water, oil and dirt.



| Diagram | Article No. | Order Reference | Colour | Label Width A (mm) | Label Height B (mm) | Printable Area Width PW (mm) | Printable Area Height PH (mm) | Vertical Repeat D (mm) | Min. Wire Diameter (mm) | Max. Wire Diameter (mm) | Labels per Roll | Printer Ribbon Series |
|------------------------------|-------------|-----------------|-------------------|--------------------|---------------------|------------------------------|-------------------------------|------------------------|-------------------------|-------------------------|-----------------|-----------------------|
| B-427: Self-laminating Vinyl | | | | | | | | | | | | |
| ▶ | 801612 | WRAP-1-427 | White/Transparent | 12.70 | 19.05 | 12.70 | 9.53 | 22.20 | 2.00 | 3.00 | 6800 | R4300 |
| ▶ | 805029 | WRAP-11-427 | White/Transparent | 12.70 | 38.10 | 12.70 | 12.70 | 41.30 | 4.00 | 8.10 | 3600 | R4300 |
| ▶ | 801613 | WRAP-2-427 | White/Transparent | 25.40 | 25.40 | 25.40 | 9.53 | 28.60 | 2.70 | 5.10 | 5300 | R4300 |
| ▶ | 801614 | WRAP-3-427 | White/Transparent | 25.40 | 31.75 | 25.40 | 12.70 | 34.90 | 3.40 | 6.10 | 4300 | R4300 |
| ▶ | 801615 | WRAP-4-427 | White/Transparent | 25.40 | 38.10 | 25.40 | 12.70 | 41.30 | 4.06 | 8.10 | 3600 | R4300 |
| ▶ | 801616 | WRAP-10-427 | White/Transparent | 25.40 | 57.15 | 25.40 | 19.05 | 60.30 | 6.10 | 12.10 | 2500 | R4300 |
| ▶ | 801617 | WRAP-5-427 | White/Transparent | 38.10 | 63.50 | 38.10 | 19.05 | 66.70 | 6.70 | 14.20 | 2200 | R4300 |
| ▶ | 805030 | WRAP-12-427 | White/Transparent | 50.80 | 38.10 | 50.80 | 12.70 | 41.30 | 4.06 | 8.10 | 3600 | R4300 |
| ▶ | 801618 | WRAP-6-427 | White/Transparent | 50.80 | 76.20 | 50.80 | 25.40 | 79.37 | 8.10 | 16.20 | 1900 | R4300 |

Nylon Cloth

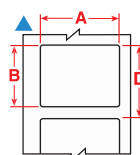
Nylon cloth with permanent adhesive allows labelling in environments with heat, cold, oil and dirt. Ideal for wire and cable marking, electronic component marking, laboratory vial identification, and general labelling.



| Diagram | Article No. | Order Reference | Colour | Label Width A (mm) | Label Height B (mm) | Min. Wire Diameter (mm) | Max. Wire Diameter (mm) | Vertical Repeat D (mm) | Labels per Roll | Printer Ribbon Series |
|--------------------|-------------|-----------------|--------|--------------------|---------------------|-------------------------|-------------------------|------------------------|-----------------|-----------------------|
| B-499: Nylon Cloth | | | | | | | | | | |
| ▲ | 801619 | WRAP-7-499 | White | 12.70 | 19.05 | 1.52 | 5.06 | 22.22 | 4500 | R4300 |
| ▲ | 801620 | WRAP-8-499 | White | 25.40 | 38.10 | 4.04 | 11.13 | 41.27 | 2800 | R4300 |
| ▲ | 801621 | WRAP-9-499 | White | 50.80 | 50.80 | 5.39 | 15.16 | 53.97 | 2100 | R4300 |
| ▲ | 805031 | WRAP-13-499 | White | 25.40 | 25.40 | 2.69 | 7.09 | 28.57 | 4100 | R4300 |

Polyimide

B-472 is specifically designed to self-extinguish and prevent flames from propagating. This material is ideal for wire and cable identification in extreme environments, particularly in the aerospace, defense and mass transit industries.



| Diagram | Article No. | Order Reference | Colour | Label Width A (mm) | Label Height B (mm) | Min. Wire Diameter (mm) | Max. Wire Diameter (mm) | Vertical Repeat D (mm) | Labels per Roll | Printer Ribbon Series |
|------------------|-------------|-----------------|--------|--------------------|---------------------|-------------------------|-------------------------|------------------------|-----------------|-----------------------|
| B-472: Polyimide | | | | | | | | | | |
| ▲ | 129971 | WRAP-1-472 | White | 12.70 | 19.05 | 3.30 | 8.13 | 22.22 | 6800 | R2000, R4300, R6200 |
| ▲ | 129972 | WRAP-6-472 | White | 50.80 | 76.20 | 3.30 | 15.14 | 79.37 | 1900 | R2000, R4300, R6200 |

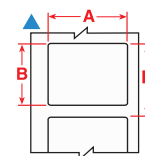
Printer materials

The following part numbers are specially designed for use with the **BradyPrinter A5500 Flag Label Printer Applicator**.



Paper/Polypropylene/Polyvinylfluoride/Polyester Thermal Transfer Printable Labels

Regardless whether your cable and wire flag labelling needs to be permanent, of the highest quality, for general identification or for temporary work-in-progress labelling, with our extended label material options we have a solution.



| Diagram | Article No. | Order Reference | Colour | Label Width A (mm) | Label Height B (mm) | Min. Wire Diameter (mm) | Max. Wire Diameter (mm) | Vertical Repeat D (mm) | Labels per Roll | Printer Ribbon Series |
|---------------------------------|-------------|-----------------|--------|--------------------|---------------------|-------------------------|-------------------------|------------------------|-----------------|-----------------------|
| B-424: Paper | | | | | | | | | | |
| ▲ | 151825 | A55-1-424 | White | 25.40 | 38.10 | 1.52 | 4.83 | 41.28 | 3800 | R4300, R6100 |
| ▲ | 151826 | A55-2-424 | White | 38.10 | 38.10 | 1.52 | 4.83 | 41.28 | 3800 | R4300, R6100 |
| ▲ | 151827 | A55-3-424 | White | 50.80 | 38.10 | 1.52 | 4.83 | 41.28 | 3800 | R4300, R6100 |
| ▲ | 151828 | A55-4-424 | White | 25.40 | 63.50 | 3.30 | 8.13 | 66.68 | 2400 | R4300, R6100 |
| ▲ | 151829 | A55-5-424 | White | 38.10 | 63.50 | 3.30 | 4.83 | 66.68 | 2400 | R4300, R6100 |
| ▲ | 151830 | A55-6-424 | White | 50.80 | 63.50 | 3.30 | 9.65 | 66.68 | 2400 | R4300, R6100 |
| ▲ | 151831 | A55-7-424 | White | 50.80 | 76.20 | 8.13 | 15.24 | 79.38 | 2000 | R4300, R6100 |
| ▲ | 151832 | A55-11-424 | White | 25.40 | 50.80 | 1.52 | 8.13 | 53.98 | 3000 | R4300, R6100 |
| ▲ | 151833 | A55-12-424 | White | 25.40 | 76.20 | 8.13 | 15.24 | 79.38 | 2000 | R4300, R6100 |
| ▲ | 151834 | A55-13-424 | White | 50.80 | 50.80 | 1.52 | 6.35 | 53.98 | 3000 | R4300, R6100 |
| B-425: Polypropylene | | | | | | | | | | |
| ▲ | 151835 | A55-1-425 | White | 25.40 | 38.10 | 1.52 | 4.83 | 41.28 | 3300 | R4300 |
| ▲ | 151836 | A55-2-425 | White | 38.10 | 38.10 | 1.52 | 0.48 | 41.28 | 3300 | R4300 |
| ▲ | 151837 | A55-3-425 | White | 50.80 | 38.10 | 1.52 | 4.83 | 41.28 | 3300 | R4300 |
| ▲ | 151838 | A55-4-425 | White | 25.40 | 63.50 | 3.30 | 9.65 | 66.68 | 2000 | R4300 |
| ▲ | 151839 | A55-5-425 | White | 38.10 | 63.50 | 3.30 | 8.13 | 66.68 | 2000 | R4300 |
| ▲ | 151840 | A55-6-425 | White | 50.80 | 63.50 | 3.30 | 8.13 | 66.68 | 2000 | R4300 |
| ▲ | 151841 | A55-7-425 | White | 50.80 | 76.20 | 8.13 | 12.70 | 79.38 | 1700 | R4300 |
| ▲ | 151842 | A55-11-425 | White | 25.40 | 50.80 | 1.52 | 6.35 | 53.98 | 2500 | R4300 |
| ▲ | 151843 | A55-12-425 | White | 25.40 | 76.20 | 8.13 | 15.24 | 79.38 | 1700 | R4300 |
| ▲ | 151844 | A55-13-425 | White | 50.80 | 50.80 | 1.52 | 8.13 | 53.98 | 2500 | R4300 |
| B-437: Polyvinylfluoride | | | | | | | | | | |
| ▲ | 151845 | A55-1-437 | White | 25.40 | 38.10 | 1.52 | 4.83 | 41.28 | 3800 | R4300 |
| ▲ | 151846 | A55-2-437 | White | 38.10 | 38.10 | 1.52 | 4.83 | 41.28 | 3800 | R4300 |
| ▲ | 151847 | A55-3-437 | White | 50.80 | 38.10 | 1.52 | 4.83 | 41.28 | 3800 | R4300 |
| ▲ | 151848 | A55-4-437 | White | 25.40 | 63.50 | 3.30 | 12.70 | 66.68 | 2400 | R4300 |
| ▲ | 151849 | A55-5-437 | White | 38.10 | 63.50 | 3.30 | 9.65 | 66.68 | 2400 | R4300 |
| ▲ | 151850 | A55-6-437 | White | 50.80 | 63.50 | 3.30 | 9.65 | 66.68 | 2400 | R4300 |
| ▲ | 151851 | A55-7-437 | White | 50.80 | 76.20 | 8.13 | 15.24 | 79.38 | 2000 | R4300 |
| ▲ | 151852 | A55-11-437 | White | 25.40 | 50.80 | 1.52 | 6.35 | 53.98 | 3000 | R4300 |
| ▲ | 151853 | A55-12-437 | White | 25.40 | 76.20 | 8.13 | 15.24 | 79.38 | 2000 | R4300 |
| ▲ | 151854 | A55-13-437 | White | 50.80 | 50.80 | 1.52 | 8.13 | 53.98 | 3000 | R4300 |
| B-483A: Polyester | | | | | | | | | | |
| ▲ | 150697 | A55-1-483 | White | 25.40 | 38.10 | 1.52 | 4.83 | 41.28 | 3600 | R6000HF |
| ▲ | 150698 | A55-2-483 | White | 38.10 | 38.10 | 1.52 | 4.83 | 41.28 | 3600 | R6000HF |
| ▲ | 150699 | A55-3-483 | White | 50.80 | 38.10 | 1.52 | 4.83 | 41.28 | 3600 | R6000HF |
| ▲ | 150700 | A55-4-483 | White | 25.40 | 63.50 | 3.30 | 12.70 | 66.68 | 2200 | R6000HF |
| ▲ | 150701 | A55-5-483 | White | 38.10 | 63.50 | 3.30 | 12.70 | 66.68 | 2200 | R6000HF |
| ▲ | 150702 | A55-6-483 | White | 50.80 | 63.50 | 3.30 | 12.70 | 66.68 | 2200 | R6000HF |
| ▲ | 150703 | A55-7-483 | White | 50.80 | 76.20 | 12.70 | 15.24 | 79.38 | 1900 | R6000HF |
| ▲ | 151865 | A55-10-483 | White | 12.70 | 38.10 | 1.52 | 4.83 | 41.28 | 3600 | R6000 |
| ▲ | 151866 | A55-11-483 | White | 25.40 | 50.80 | 1.52 | 6.35 | 53.98 | 2800 | R6000 |
| ▲ | 151867 | A55-12-483 | White | 25.40 | 76.20 | 8.13 | 15.24 | 79.38 | 1900 | R6000 |
| ▲ | 151868 | A55-13-483 | White | 50.80 | 50.80 | 1.52 | 6.35 | 53.98 | 2800 | R6000 |
| ▲ | 151869 | A55-14-483 | White | 19.05 | 38.10 | 1.52 | 4.83 | 41.28 | 3600 | R6000 |

Ribbons

| Article No. | Order Reference | Width (mm) | Description |
|-------------|-----------------|------------|---|
| 150706 | SSR4302 | 60.00 | Black 4300 Series Thermal Transfer Printer Ribbon for BradyPrinter A5500 |
| 150707 | SSR4306 | 40.00 | Black 4300 Series Thermal Transfer Printer Ribbon for BradyPrinter A5500 |
| 150709 | SSR6002 | 60.00 | Black 6000 Series Halogen Free Thermal Transfer Printer Ribbon for BradyPrinter A5500 |
| 150710 | SSR6006 | 40.00 | Black 6000 Series Halogen Free Thermal Transfer Printer Ribbon for BradyPrinter A5500 |
| 151810 | SSR6102 | 60.00 | Black 6100 Series Thermal Transfer Printer Ribbon for BradyPrinter A5500 |

Design, print and manage your labelling with software

Brady Workstation Desktop Software

Design and print labels seamlessly with Brady Workstation software suites. Each includes specialised apps that can be used for a variety of common industry-related tasks. Along with popular time-saving features like auto-formatting and built-in templates, Brady Workstation software features an intuitive interface that integrates easily with the work you do.

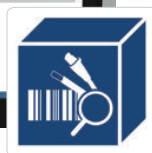
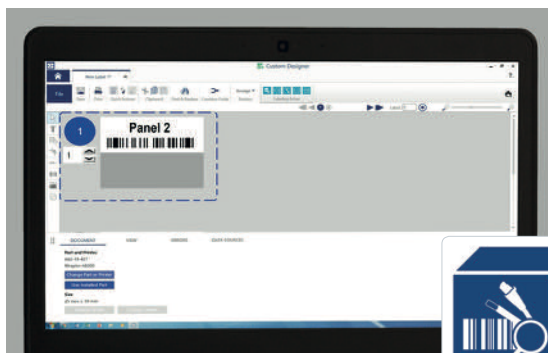


1. Go to Workstation.BradyID.com.



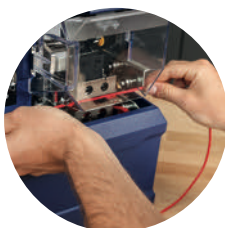
2. Fill the workstation with the apps and suites you want.

For more information on Brady Workstation apps and suites, go to Workstation.BradyID.com.



Product and Wire Identification Suite (software included)

Get faster, more efficient labelling for wires and cables. Use these apps to create labels with text, graphics and custom formatting. Or, make labels by serialising and importing pre-existing data.



AUTOMATED PRINT AND APPLY



SPECIALISED HIGH QUALITY IDENTIFICATION

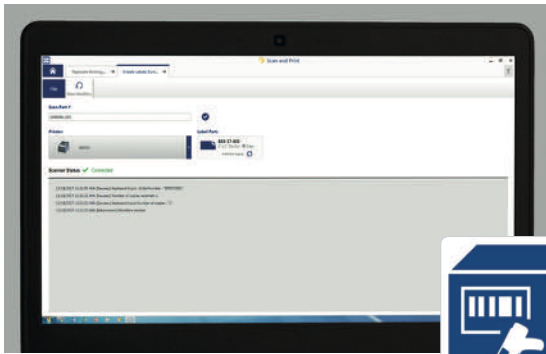


SOFTWARE



SUPPORT AND SERVICES

Design, print and manage your labelling with software



Automation Suite

Save time and labour by fully automating your label printing. These apps make it easy to set up templates and import data, to automate your label creation process and to make it error-free.



Scan and Print Suite

Quickly populate data in label templates with these apps. Just use a barcode scanner, keyboard or custom script. Ideal for labelling off-of-work orders and re-labelling supplied parts for product assembly.



Easily Connect to Your Printer

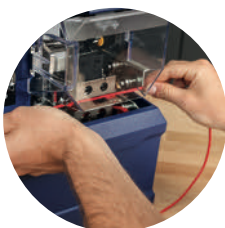
Brady Workstation works seamlessly with a range of Brady printers. Simply connect a Brady printer to an internet connected computer to access and print your Brady Workstation label templates and functionalities.

Brady's high-end label printers also offer bi-directional communication with Brady Workstation and will inform users if they have to switch label materials to print specific label designs.



Try it today!

Discover more on www.bradyeurope.com/bradyworkstation
Click or scan the QR-code



AUTOMATED PRINT AND APPLY



SPECIALISED HIGH QUALITY IDENTIFICATION



SOFTWARE



SUPPORT AND SERVICES

Support & services

Service agreements

On top of an included 1 year warranty, Brady offers premium support service agreements. Service agreements are fully customisable to your needs and can include premium support by phone and/or support at your premises.

Available service agreement options:

- preventive maintenance
- fast repairs
- replacement devices
- dedicated in-house contact center
- support in 12 languages
- local presence
- man hours included
- no unexpected costs



Scanners

High quality scanners are available. With portable scanners, you will be able to scan barcodes printed on cable labels and sleeves to monitor production output and manage inventory.

Available scanner services:

- scanner purchasing
- scanner configuration
- scanner integration



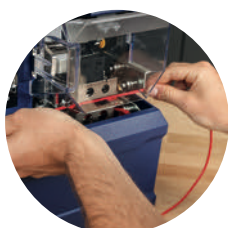
Integration

Brady also offers advice, support and full collaboration with third parties to help integrate our labelling solutions in your production line.



In-house laboratory

Brady's in-house laboratories rigorously test our solutions in line with standard testing methods. Our scientists test the performance of complete label constructions including the liner, adhesives, label materials and label top coat to deliver solutions that solve your challenges. Our in-house lab can offer test results on request or test new label requirements when relevant.



**AUTOMATED PRINT
AND APPLY**



**SPECIALISED HIGH
QUALITY IDENTIFICATION**



SOFTWARE



**SUPPORT AND
SERVICES**

Africa

Randburg, South Africa
 Tel.: +27 11 704 3295
 Email: africa@bradycorp.com

Benelux

Zeleville, Belgium
 Tel.: +32 (0) 52 45 78 11
 Email: benelux@bradycorp.com

Central & Eastern Europe

Bratislava, Slovakia
 Tel.: +421 2 3300 4800
 Email: central_europe@bradycorp.com

Denmark

Odense
 Tel.: +45 66 14 44 00
 Email: denmark@bradycorp.com

France

Roncq
 Tel.: +33 (0) 3 20 76 94 48
 Email: france@bradycorp.com

Germany, Austria & Switzerland

Egelsbach, Germany
 Tel.: +49 (0) 6103 7598 660
 Email: germany@bradycorp.com

Hungary

Budaörs
 Tel.: +36 23 500 275
 Email: central_europe@bradycorp.com

Italy

Gorgonzola
 Tel.: +39 02 26 00 00 22
 Email: italy@bradycorp.com

Middle East FZE

Dubai, UAE
 Tel.: +971 4881 2524
 Email: me@bradycorp.com

Norway

Kjeller
 Tel.: +47 70 13 40 00
 Email: norway@bradycorp.com

Russia

Moscow
 Tel.: +7 495 269 47 87
 Email: central_europe@bradycorp.com

Spain & Portugal

Madrid, Spain
 Tel.: +34 900 902 993
 Email: spain@bradycorp.com,
 portugal@bradycorp.com

Sweden, Finland, Baltic states

Kista, Sweden
 Tel.: +46 (0) 8 590 057 30
 Email: sweden@bradyeurope.com

Turkey

Istanbul
 Tel.: +90 212 264 02 20 / 264 02 21
 Email: turkey@bradycorp.com

UK & Ireland

Banbury, UK
 Tel.: +44 (0) 1295 228 288
 Email: uk@bradycorp.com

Our mission is to identify and protect people, products and places



To help minimise our impact on the environment, Brady limits its number of reprints.

Updated versions are always available for download on www.bradyeurope.com.

 Search for: EUR-M-953-EN



Y4611898

Your distributor

16/04/2021