

Logistics & Calibration Labelling



Logistics Labelling: Why?

All those who are professionally involved know that a well identified warehouse improves the efficiency of a company.

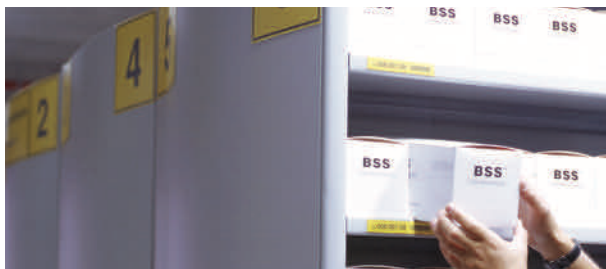
Clear, accurate and informative identification can be linked directly to improving general efficiency. Now, you too can benefit from our experience and improve your effectiveness!

- Are you forever trying to cope with unidentified racks?
- Do you need to combine bar codes, logos and text on one label?

Brady will help you find the solution that works best for your environment!



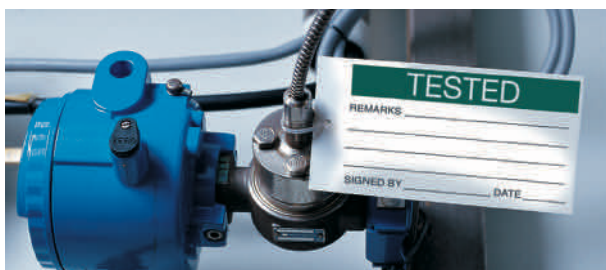
Numbered Panels: Loading Dock Panels, Gangway Panels, Bin Panels



Bin Location Labels



Numbers & Letters



Write-on Labels

CONTENT:

Logistics labelling: why?	2
Bin location labels	3
Numbers & letters: introduction	4
Numbers & letters: sizes	5
Number & Letters For indoor use (B-500)	6
Number & Letters For indoor & outdoor use (B-946)	8
Numbers & Letters: Large Sizes	9
Numbered Panels	9
Bradyfoam™ Mounting Tape	10
Make your own projecting or corridor warehouse signs.	10
Easy Number	10
Paper Labels On A Roll	10
Magnetic Numbers & Letters	11
Blank Magnetic Strips & Labels	12
Magnetic pouches	13
Inspection Date Labels	
Standard Vinyl Date Labels	14
Rectangular Vinyl Date Labels	15
Tamper-evident Date Labels	16
Polyester Date Labels	17
Hole punch	15
Write-on labels	18
Pens	18
Write-on Tags	21
Brady Sign and Label Printers	22

BRADY Customise-it

Because of the variety of information that can be printed on these types of labels or panels, part numbers are not shown here.

Please contact your Brady Distributor who will pass the variable information onto us.

HOW TO ORDER: SEE NEXT PAGES

BIN LOCATION LABELS

THESE LABELS ARE IDEAL FOR UNIQUE AND SPECIALISED IDENTIFICATION IN INDUSTRY AND WAREHOUSING

Bin Location Labels can be used for numerous applications:

- Clean and clear warehouse identification
- Machine labelling: internal numbering
- Product codification
- Inventory serialisation
- Alpha numeric coding
- Valve identification

Using these type of labels saves you a lot of time because we print the variable information on the labels for you. On one label you can combine variable text, part numbers, bar codes and logos. BRADY labels are manufactured quickly, efficiently and carefully, to meet your demands for clearer and more accurate methods of identification.

Choose the size, the colour and the material you need.

HOW TO ORDER?

1 Select a material

- Laminated Polyester - Permanent Adhesive (B-7541)
- Laminated Polyester - Removable Adhesive (B-433)
- Magnetic (B-859)

2 Determine the appropriate size for your application.

3 Choose the appropriate colours. You may choose up to 4 from the following:



4 Determine the layout: please send us a sketch of how you would like the information to be positioned.

5 Determine the information you want to be printed:

- Serialised Numbers: starting point - end point - increment
- Bar codes
 - EAN 128
 - UPCA
 - 2/5 interleaved
 - Code 39
 - UPCE
- Text: number of characters and height, minimum character height = 2 mm.
- We can load digital information directly into our production machines (ASCII, Lotus, Excel or Dbase)

6 Determine total quantity per type of label.



MATERIALS

- **Self-adhesive polyester with permanent adhesive (B-7541):** suitable for indoor and outdoor use. Has a clear polyester overlaminate.
- **Self-adhesive polyester with removable adhesive (B-433):** label can be removed without leaving traces.
- **Magnetic material (B-859):** offers you complete flexibility when your warehouse changes its locations. Can be reused over and over again.

OPTIONS

Serialisation



Multiple Print Directions



Bar Codes



Logos





THE HIGHLY VISIBLE BLACK AND YELLOW MARKERS FROM BRADY!

DURABLE, WATERPROOF, NON-FADING, SCRATCH PROOF AND OIL RESISTANT

Brady's range of Numbers & Letters offer every company unlimited applications for labelling and marking. The highly visible characters improve safety by adding clarity, thus reducing any dangers caused by confusing or inadequate signage. Brady self-adhesive Numbers & Letters are made from either hard-wearing cloth coated with PVC (B-500 for the 3400 series) or from vinyl (B-946 for the 1500 series).

They can be used for marking just about anything in the work place: boxes, signs, doors, windows, shelves, equipment, machines and spare parts.

Brady Numbers & Letters for indoor applications (3400 series) are permanent, scratch proof and oil resistant.

Brady Numbers & Letters for outdoor use (1500 series) are especially weather-proof and UV light resistant.

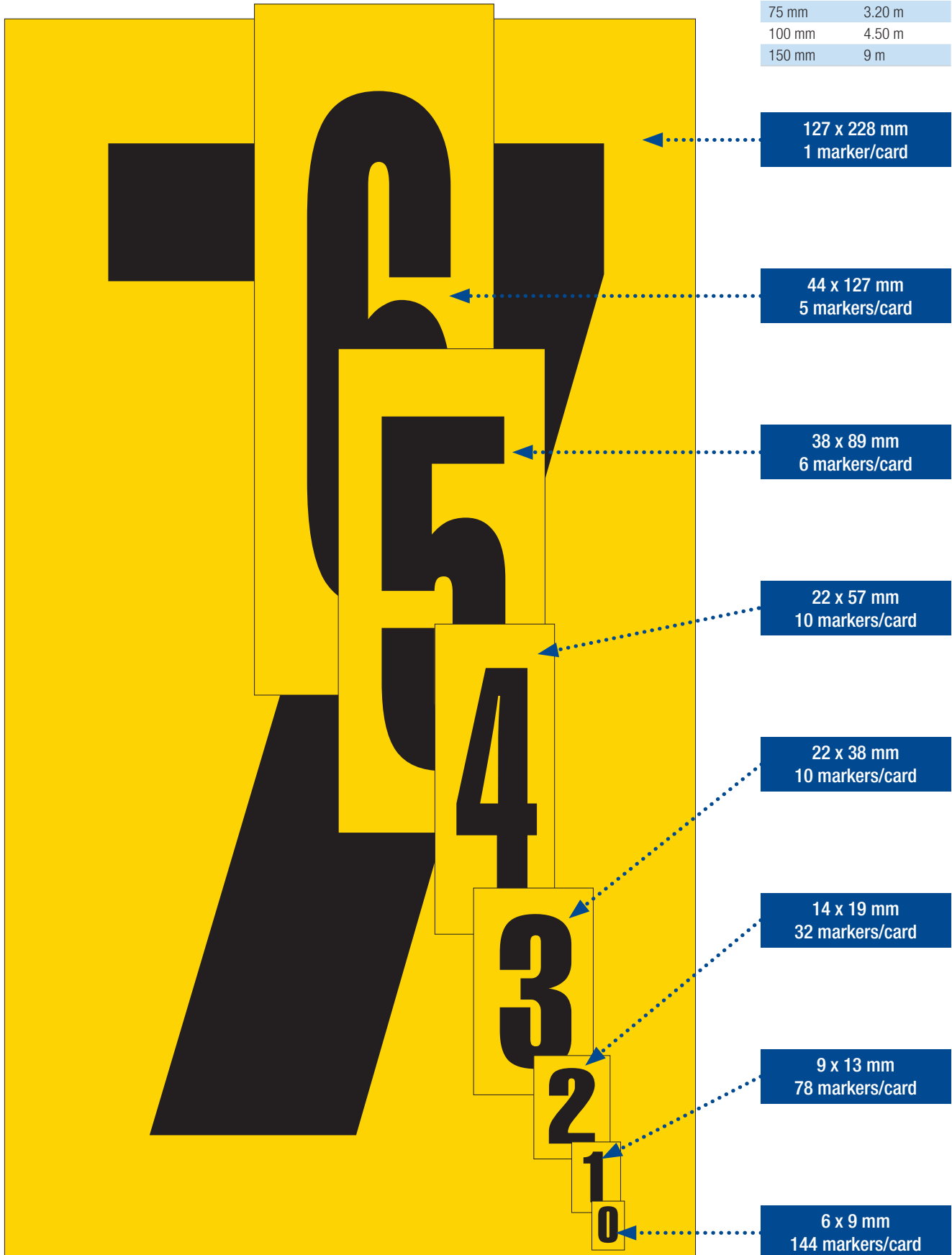


FOR MARKING:

**WAREHOUSES • OFFICES • TOOLS • MACHINES
RACKS • CUPBOARDS • SHELVES • BOXES
OFFICE EQUIPMENT**



Character height	Readability Distance
25 mm	1.20 m
38 mm	1.80 m
50 mm	2.30 m
75 mm	3.20 m
100 mm	4.50 m
150 mm	9 m



Number & Letters For indoor use (B-500)

IDENTICAL NUMBERS OR LETTERS ON ONE CARD



i Series 3420, 3430, 3440 and 3450 + NL + CNL: hyphens (DSH) and arrows (ARO) are available
Series 3400, 3410, 3460, 3470: hyphens (DSH) are available, but no arrows.

- Ordering: In place of the asterisk, simply add the suffix for desired letters (A-Z), numbers (0-9), hyphens (DSH) or arrows (ARO) to the order reference shown in the table
- Packaging: 25 identical cards per pack
- Material: Vinyl cloth (B-500)

Order Ref.	Colour		Height (mm) x Width (mm)	Character Height (mm)	Quantity
3400-*	Black on Yellow	●	9.00 x 6.00	6.30	144/Card
NL-W05-*	Black on White	●	13.00 x 9.00	8.00	78/Card
3410-*	Black on Yellow	●	13.00 x 9.00	8.00	78/Card
NL-W75-*	Black on White	●	19.00 x 14.00	16.00	32/Card
3420-*	Black on Yellow	●	19.00 x 14.00	16.00	32/Card
NL-W15-*	Black on White	●	38.00 x 22.00	25.00	10/Card
3430-*	Black on Yellow	●	38.00 x 22.00	25.00	10/Card
CNL1B-*	White on Blue	●	38.00 x 22.00	25.00	10/Card
CNL1G-*	White on Green	●	38.00 x 22.00	25.00	10/Card
CNL1GR-*	White on Grey	●	38.00 x 22.00	25.00	10/Card
CNL1O-*	White on Orange	●	38.00 x 22.00	25.00	10/Card
CNL1R-*	White on Red	●	38.00 x 22.00	25.00	10/Card
NL-W225-*	Black on White	●	57.00 x 22.00	49.00	10/Card
3440-*	Black on Yellow	●	57.00 x 22.00	49.00	10/Card
CNL 2B-*	White on Blue	●	57.00 x 22.00	49.00	10/Card
CNL 2G-*	White on Green	●	57.00 x 22.00	49.00	10/Card
CNL 2GR-*	White on Grey	●	57.00 x 22.00	49.00	10/Card
CNL 2OR-*	White on Orange	●	57.00 x 22.00	49.00	10/Card
CNL 2R-*	White on Red	●	57.00 x 22.00	49.00	10/Card
3450-*	Black on Yellow	●	89.00 x 38.00	75.00	6/Card
3460-*	Black on Yellow	●	127.00 x 44.00	98.00	5/Card
3470-*	Black on Yellow	●	228.00 x 127.00	152.00	1/Card

COMBINATION PACKS: ASSORTED MARKERS ON A DISPENSER CARD

- Ordering: By part numbers and type
- Packaging: 25 cards per pack (26 cards per pack for order reference 034751 and 034752)
- Material: Vinyl cloth (B-500)



Article No.	Colour		Height (mm) x Width (mm)	Character Height (mm)	Quantity	Number of Markers per Number/Letter
0-9						
034052	Black on Yellow	●	9.00 x 6.00	6.30	144/Card	Pack contains 400 pcs 0 thru 5, 300 pcs 6 thru 9
034152	Black on Yellow	●	13.00 x 9.00	8.00	78/Card	Pack contains 225 pcs 0 thru 5, 150 pcs 6 thru 9
034252	Black on Yellow	●	19.00 x 14.00	16.00	32/Card	Pack contains 100 pcs 0 thru 5, 50 pcs 6 thru 9
034352	Black on Yellow	●	38.00 x 22.00	25.00	10/Card	Pack contains 25 pcs 0 thru 9
034452	Black on Yellow	●	57.00 x 22.00	49.00	10/Card	Pack contains 25 pcs 0 thru 9
034552	Black on Yellow	●	89.00 x 38.00	75.00	6/Card	Pack contains 25 pcs 0 & 1, 15 pcs 2 thru 5, 10 pcs 6 thru 9
034652	Black on Yellow	●	127.00 x 44.00	98.00	5/Card	Pack contains 15 pcs 1 thru 5, 10 pcs 6 thru 9 & 0
034752	Black on Yellow	●	228.00 x 127.00	152.00	1/Card	Pack contains 3 pcs 1 thru 5, 2 pcs 6 thru 9 & 0
A-Z						
034051	Black on Yellow	●	9.00 x 6.00	6.30	144/Card	Pack contains 400 pcs A & E, 300 pcs B, 200 pcs C & D, 100 pcs F thru Z
034151	Black on Yellow	●	13.00 x 9.00	8.00	78/Card	Pack contains 75 pcs A thru Z
034251	Black on Yellow	●	19.00 x 14.00	16.00	32/Card	Pack contains 50 pcs A thru F, 25 pcs G thru Z
034351	Black on Yellow	●	38.00 x 22.00	25.00	10/Card	Pack contains 17 pcs A,B, C and E, 9 pcs D, F thru J, 8 pcs K thru Z
034451	Black on Yellow	●	57.00 x 22.00	49.00	10/Card	Pack contains 17 pcs A,B, C and E, 9 pcs D, F thru J, 8 pcs K thru Z
034551	Black on Yellow	●	89.00 x 38.00	75.00	6/Card	Pack contains 10 pcs A thru C, E, 5 pcs D & F thru Z
034651	Black on Yellow	●	127.00 x 44.00	98.00	5/Card	Pack contains 6 pcs A & E, 5 pcs B,C,D F thru Y, 3 pcs Z
034751	Black on Yellow	●	228.00 x 127.00	152.00	1/Card	Packs contains 1 pc A thru Z

CONSECUTIVE MARKERS

- Ordering: By part numbers
- Packaging: 1 series per pack (25 identical cards per pack) Consecutive B-500 markers contain numerical or alphabetical sequences on the same card. Small marker sizes contain complete numerical or alphabetical sequences. Larger sized cards break the alphabet into three parts: A–J, K–T and U–Z
- Material: Vinyl cloth (B-500)

Article No.	Colour	Height (mm) x Width (mm)	Character Height (mm)	Quantity	Number of Markers per Number/Letter
A-Z					
034138	Black on Yellow	13.00 x 9.00	10.00	78/Card	Pack contains 75 pcs A thru Z
A-J					
034340	Black on Yellow	38.00 x 22.00	26.00	10/Card	Pack contains 25 pcs A thru J
034440	Black on Yellow	57.00 x 22.00	50.00	10/Card	Pack contains 25 pcs A thru J
K-T					
034341	Black on Yellow	38.00 x 22.00	26.00	10/Card	Pack contains 25 pcs K thru T
034441	Black on Yellow	57.00 x 22.00	50.00	10/Card	Pack contains 25 pcs K thru T
U-Z					
034342	Black on Yellow	38.00 x 22.00	26.00	10/Card	Pack contains 50 pcs U to X, 25 pcs Y to Z
034442	Black on Yellow	57.00 x 22.00	50.00	10/Card	Pack contains 50 pcs U to X, 25 pcs Y to Z
0-9					
034010	Black on Yellow	9.00 x 6.00	6.30	144/Card	Pack contains 400 pcs 0 thru 5, 300 pcs 6 thru 9
034110	Black on Yellow	13.00 x 9.00	10.00	78/Card	Pack contains 225 pcs 0 thru 5, 150 pcs 6 thru 9
034210	Black on Yellow	19.00 x 14.00	16.00	32/Card	Pack contains 100 pcs 0 thru 5, 50 pcs 6 thru 9
034310	Black on Yellow	38.00 x 22.00	26.00	10/Card	Pack contains 25 pcs 0 thru 9
034410	Black on Yellow	57.00 x 22.00	50.00	10/Card	Pack contains 25 pcs 0 thru 9



Number & Letters For indoor & outdoor use (B-946)



B-946 vinyl: ideal for all applications, indoors or out

- Strong adhesive - even sticks to rough surfaces
- Print is resistant to abrasion
- Weatherproof and resistant to UV light
- Suitable for use in temperatures between -40°C and 82°C
- Waterproof, resistant to oils, alkalis, acids etc.

IDENTICAL NUMBERS OR LETTERS ON ONE CARD

- Ordering: By part number with suffix for desired letters (A–Z), numbers (0–9), hyphens (DSH) or arrows (ARO)
- Packaging: 25 cards per pack
- Material: Vinyl (B-946)



Order Ref.	Colour	Height (mm) x Width (mm)	Character Height (mm)	Quantity
1520-	Black on Yellow	19.00 x 14.00	15.00	32/Card
9712-	Black on White	19.00 x 14.00	16.00	32/Card
1530-	Black on Yellow	38.00 x 22.00	25.00	10/Card
9713-	Black on White	38.00 x 22.00	25.00	10/Card
1534-	Black on Yellow	57.00 x 22.00	50.00	10/Card
9714-	Black on White	57.00 x 46.00	49.00	5/Card
1550-	Black on Yellow	89.00 x 38.00	75.00	6/Card
1560-	Black on Yellow	127.00 x 44.00	98.00	5/Card
1570-	Black on Yellow	228.00 x 127.00	152.00	1/Card



Series 1560, 1570, 9712, 9713 and 9714: no arrows are available.

NUMBERS OR LETTERS IN COMBINATION PACKS

- Ordering: By part number and type
- Packaging: 25 card per pack: (except 097598 26 cards per pack)
- Material: Vinyl (B-946)



Article No.	Colour	Height (mm) x Width (mm)	Character Height (mm)	Quantity	Number of Markers per Number/Letter
0-9					
097601	Black on Yellow	19.00 x 14.00	15.00	32/Card	Pack contains 150 pcs 1 & 2, 75 pcs 0 & 3 thru 5, 50 pcs 6 thru 9
806201	Black on White	19.00 x 14.00	15.00	32/Card	Pack contains 150 pcs 1 & 2, 75 pcs 0 & 3 thru 5, 50 pcs 6 thru 9
097603	Black on Yellow	38.00 x 22.00	25.00	10/Card	Pack contains 25 pcs 0 thru 9
097605	Black on Yellow	57.00 x 22.00	50.00	10/Card	Pack contains 25 pcs 0 thru 9
806202	Black on White	38.00 x 22.00	25.00	10/Card	Pack contains 25 pcs 0 thru 9
097607	Black on Yellow	89.00 x 38.00	75.00	6/Card	Pack contains 25 pcs 0 & 1, 15 pcs 2 thru 5, 10 pcs 6 thru 9
097129	Black on Yellow	127.00 x 44.00	98.00	5/Card	Pack contains 15 pcs 1 thru 5, 10 pcs 6 thru 9 & 0
097711	Black on White	57.00 x 46.00	49.00	5/Card	Pack contains 15 pcs 1 thru 5, 10 pcs 6 thru 9 & 0
097599	Black on Yellow	228.00 x 127.00	152.00	1/Card	Pack contains 3 pcs 1 thru 5, 2 pcs 6 thru 9 & 0
A-Z					
097600	Black on Yellow	19.00 x 14.00	15.00	32/Card	Pack contains 50 pcs A thru F, 25 pcs G thru Z
097602	Black on Yellow	38.00 x 22.00	25.00	10/Card	Pack contains 17 pcs A thru C & E, 9 pcs D & F thru J, 8 pcs K thru Z
097604	Black on Yellow	57.00 x 22.00	50.00	10/Card	Pack contains 16 pcs A,B,C & E, 8 pcs D & F thru Z
097606	Black on Yellow	89.00 x 38.00	75.00	6/Card	Pack contains 10 pcs A,B, C & E, 5 pcs D & F thru Z
097128	Black on Yellow	127.00 x 44.00	98.00	5/Card	Pack contains 6 pcs A & E, 5 pcs B thru D & F thru Y, 3 pcs Z
097712	Black on White	57.00 x 46.00	49.00	5/Card	Pack contains 6 pcs A & E, 5 pcs B,C,D & F thru Y, 3 pcs Z
097598	Black on Yellow	228.00 x 127.00	152.00	1/Card	Packs contains 1 pc A thru Z

NUMBERS & LETTERS DIN A4 SIZE FOR A PERMANENT OR TEMPORARY IDENTIFICATION

THESE NUMBERS AND LETTERS ARE A UNIQUE TOOL TO IDENTIFY RACKS AND GANGWAYS IN YOUR WAREHOUSE. DIFFERENT COLOURS ENABLE YOU TO IDENTIFY IN A VERY SPECIFIC WAY: E.G. EACH RANGE OF PRODUCTS HAS A SPECIFIC COLOUR, OR EACH FLOOR OR RACK HAS A SPECIFIC COLOUR, ETC.

Ordering: By part number with suffix for desired letters (A–Z), numbers (0–9), hyphens (DASH), dots (DOT) or arrows (ARROW)

Packaging: 1/ Pack

Available in the following materials:

- Rigid polypropylene (B-7527) – use in combination with Bradyfoam™ mounting tape
- Self-adhesive overlaminated polyester (B-7541) – quick and easy to apply
- Magnetic material (B-859) – ideal for temporary identification



Order Ref.	Colour		Height (mm) x Width (mm)	Quantity
Polypropylene - B-7527				
NL7527A4WH-*	Black on White	◐	297.00 x 210.00	1/Pack
NL7527A4YL-*	Black on Yellow	◐	297.00 x 210.00	1/Pack
NL7527A4BK-*	White on Black	◐	297.00 x 210.00	1/Pack
NL7527A4BL-*	White on Blue	◐	297.00 x 210.00	1/Pack
NL7527A4GR-*	White on Green	◐	297.00 x 210.00	1/Pack
NL7527A4RD-*	White on Red	◐	297.00 x 210.00	1/Pack
Laminated Polyester - B-7541				
NL7541A4WH-*	Black on White	◐	297.00 x 210.00	1/Pack
NL7541A4YL-*	Black on Yellow	◐	297.00 x 210.00	1/Pack
NL7541A4BK-*	White on Black	◐	297.00 x 210.00	1/Pack
NL7541A4BL-*	White on Blue	◐	297.00 x 210.00	1/Pack
NL7541A4GR-*	White on Green	◐	297.00 x 210.00	1/Pack
NL7541A4RD-*	White on Red	◐	297.00 x 210.00	1/Pack
Magnetic Plastic - B-859				
NL859A4WH-*	Black on White	◐	297.00 x 210.00	1/Pack
NL859A4YL-*	Black on Yellow	◐	297.00 x 210.00	1/Pack
NL859A4BK-*	White on Black	◐	297.00 x 210.00	1/Pack
NL859A4BL-*	White on Blue	◐	297.00 x 210.00	1/Pack
NL859A4GR-*	White on Green	◐	297.00 x 210.00	1/Pack
NL859A4RD-*	White on Red	◐	297.00 x 210.00	1/Pack

NUMBERED PANELS

APPLY THEM ON SHELVES, BINS, LOADING DOCKS, ETC.

These panels are available in different rigid or magnetic materials. The information printed on them, is specified by you! Make your choice as shown below and send the information you want on the panels to your Brady Specialist.

i The PVC panels can be attached using foamtape, screws, chains, etc.

HOW TO ORDER?

1. Select material:
 - PVC (1.5 mm)
 - PVC (3 mm)
 - Magnetic Foil (0.6 mm)
2. Determine size
3. Determine layout and character height
4. Determine number and character range you want on the panels
5. Determine quantity of each panel type

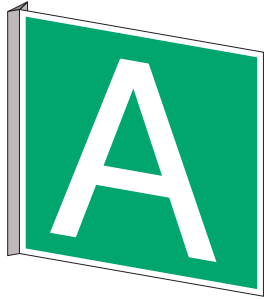




BRADYFOAM™ MOUNTING TAPE

- White polypropylene tape, is coated on both sides with high-tack, high-shear synthetic rubber adhesive for indoor and outdoor use
- Minimum application temperature: 10°C

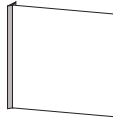
Order Ref.	Width (mm)	Height (mm)	Length (m)	Colour	Packaging
019811	25.00		33.00	White	1 Roll(s)
097200	19.00	114.00	-	White	4 Piece(s)
078273	19.00	19.00	33.00	White	1 Roll(s)



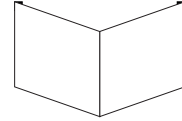
MAKE YOUR OWN PROJECTING OR CORRIDOR WAREHOUSE SIGNS.

BY USING BLANK SIGNS TOGETHER WITH ONE OF OUR STANDARD NUMBERS & LETTERS YOU CAN ADD IMPROVED VISIBILITY TO THE WAREHOUSE SIGN OF YOUR CHOICE.

Article No.	Height (mm) x Width (mm)
Blank Corridor Signs	
287134	148.00 x 148.00
287126	148.00 x 297.00
287119	200.00 x 200.00
223990	203.00 x 403.00
287128	250.00 x 250.00
287133	300.00 x 151.00
225184	300.00 x 213.00
222582	318.00 x 318.00
223991	403.00 x 203.00
222584	603.00 x 203.00



Article No.	Height (mm) x Width (mm)
Blank Projecting Signs	
253544	151.00 x 151.00
222586	151.00 x 300.00
253545	203.00 x 203.00
223992	203.00 x 403.00
253546	250.00 x 250.00
222587	300.00 x 151.00
225185	300.00 x 213.00
222583	315.00 x 315.00
223993	403.00 x 203.00
222585	600.00 x 200.00



EASY NUMBER

THE EASY AND FAST WAY TO LABEL EVERYTHING BY USING JUST ONE HANDY TOOL!

Order Ref.	Height (mm)	Colour	Cards/Pack	Labels/Card	Labels/Pack
588040	15.00	Yellow on Black	25	32	800
588042	30.00	Yellow on Black	25	10	250

i Dont forget to order a pen!

Article No.	Description	Colour	Quantity
055500	Pen - Ultra Fine (solvent based)	Black	1
055508	Pen - Fine (solvent based)	Black	1
335091	Pen - Fine	Black	1
335092	Pen - Ultra Fine	Black	1



PAPER LABELS ON A ROLL

- Available in RED, YELLOW, GREEN and BLUE
- Comes in 2 sizes
- Packaging: 1 roll of 500 labels
- More colours and sizes available on request

Article No.	Diameter (mm)	Colour	Article No.	Diameter (mm)	Colour
030661	38.00	Blue	030665	75.00	Blue
030663	38.00	Green	030667	75.00	Green
030662	38.00	Red	030666	75.00	Red
030664	38.00	Yellow	030668	75.00	Yellow

MAGNETIC NUMBERS & LETTERS

MAGNETIC DIE-CUT NUMBERS AND LETTERS ARE DESIGNED FOR EASY APPLICATION TO METAL WAREHOUSE RACKS.

They are extremely user friendly, can be applied to any metal cabinet or surface and can be reused many times. For added convenience, the die-cut labels peel back easily from their sheet.

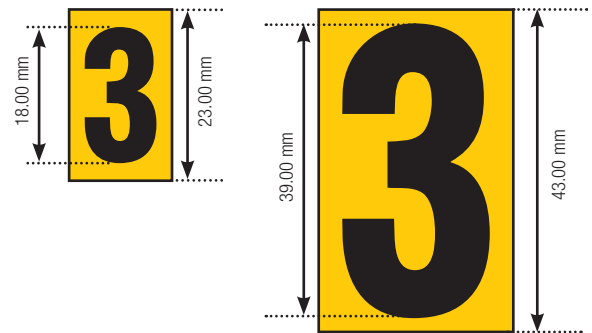
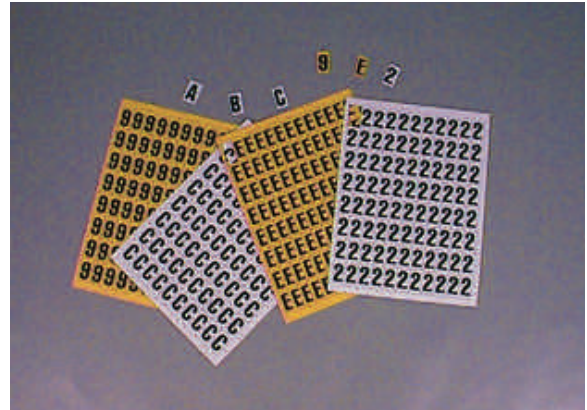
- Thickness: 1.00 mm
- Colours: white or yellow background with black print
- Packaging: 257



MAGNETIC NUMBERS ON A SHEET

Article No.	Colour	Character Height (mm)	Height (mm)
224063	Black on Yellow	18.00	23.00
224064	Black on Yellow	39.00	43.00
224065	Black on White	18.00	23.00
224066	Black on White	39.00	43.00

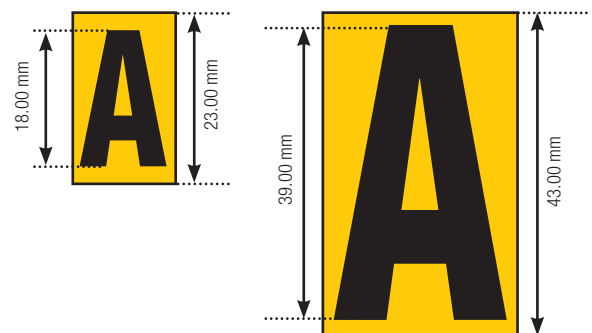
Number of characters per set													
Height: 18/23 mm						Height: 39/43 mm							
1	31 pcs	6	17 pcs	%	2 pcs	1	9 pcs	6	5 pcs	%	1 pc	-	4 pcs
2	17 pcs	7	17 pcs	0	39 pcs	2	5 pcs	7	5 pcs	0	10 pcs	+	2 pcs
3	17 pcs	8	17 pcs	▶	8 pcs	3	5 pcs	8	5 pcs	▶	2 pcs		
4	17 pcs	9	9 pcs	◻	8 pcs	4	5 pcs	9	5 pcs	◻	4 pcs		
5	17 pcs	0	39 pcs	◻	2 pcs	5	5 pcs	0	10 pcs	◻	3 pcs		



MAGNETIC LETTERS ON A SHEET

Article No.	Colour	Character Height (mm)	Height (mm)
224067	Black on Yellow	18.00	23.00
224068	Black on Yellow	39.00	43.00
224069	Black on White	18.00	23.00
224070	Black on White	39.00	43.00

Number of characters per set													
Height: 18/23 mm						Height: 39/43 mm							
A	12 pcs	K	5 pcs	U	7 pcs	A	3 pcs	K	1 pcs	U	3 pcs	<	2 pcs
B	6 pcs	L	7 pcs	V	6 pcs	B	2 pcs	L	2 pcs	V	2 pcs		
C	8 pcs	M	8 pcs	W	3 pcs	C	2 pcs	M	2 pcs	W	1 pc		
D	7 pcs	N	11 pcs	X	2 pcs	D	2 pcs	N	3 pcs	X	1 pc		
E	21 pcs	O	12 pcs	Y	2 pcs	E	4 pcs	O	2 pcs	Y	1 pc		
F	7 pcs	P	5 pcs	Z	4 pcs	F	2 pcs	P	2 pcs	Z	2 pcs		
G	7 pcs	Q	3 pcs	◻	6 pcs	G	2 pcs	Q	1 pc	◻	6 pcs		
H	6 pcs	R	9 pcs	◻	6 pcs	H	2 pcs	R	3 pcs	◻	2 pcs		
I	14 pcs	S	8 pcs			I	3 pcs	S	3 pcs	◻	2 pcs		
J	4 pcs	T	8 pcs			J	1 pc	T	3 pcs	=	1 pc		





BLANK MAGNETIC STRIPS

THESE STRIPS COME IN YELLOW OR WHITE AND MAKE IT EASY TO IDENTIFY METAL RACKS, CABINETS AND PRODUCTS IN NO TIME AT ALL.

The magnetic material can be applied to any metallic surface and just as easily be removed and placed on another rack, cabinet, etc.

Yellow and white are the standard colours but other colours can be supplied upon request (black, green, blue, red, orange, brown, beige, grey and pink).

- Available sizes: 25.00 mm, 50.00 mm and 80.00 mm
- Thickness: 0.80 mm
- Packaging: 1 roll (10 m)

Article No.	Width (mm)	Length (m)	Colour	Description
225171	25.00	10.00 m	Yellow	Blank Magnetic Strips
225172	25.00	10.00 m	White	Blank Magnetic Strips
225173	50.00	10.00 m	Yellow	Blank Magnetic Strips
225174	50.00	10.00 m	White	Blank Magnetic Strips
225175	80.00	10.00 m	Yellow	Blank Magnetic Strips
225176	80.00	10.00 m	White	Blank Magnetic Strips



MAGNETIC STRIPS: WRITE-ON / WIPE-OFF

MARK AND IDENTIFY RACKING AND SHELVING QUICKLY AND EASILY WITH THIS FLEXIBLE MAGNETIC STRIPS.

Enable easy updates and relocation of the marker as and when required, whilst keeping the face of the racks clean in appearance. Use the wipe-off pen for writing on these strips.

- Standard colours: yellow and white
- Thickness: 0.6 mm
- Packaging: 1 sheet (A4) or 1 roll (10 m)

Article No.	Width (mm)	Length (m)	Height (mm)	Colour	Packaging Pack
Magnetic write-on/wipe-off A4 sheet					
225182	210.00	-	297.00	White	1 Piece
225183	210.00	-	297.00	Yellow	1 Piece
Magnetic strips write-on/wipe-off on roll					
225178	25.00	10.00 m		Yellow	1 Roll
225179	25.00	10.00 m		White	1 Roll
225180	50.00	10.00 m		Yellow	1 Roll
225181	50.00	10.00 m		White	1 Roll

i Order these wipe-off pens to use on any of our write-on magnetic labels

Article No.	Description	Colour
225177	Wipe-off marker	Black



BLANK WRITE-ON MAGNETIC LABELS

IDEAL FOR THE IDENTIFICATION OF WAREHOUSES WITH A CONSTANTLY CHANGING LAYOUT.

This type of labels offer complete flexibility. They can be applied and removed from metal surfaces as many times as necessary. When the locations change, these labels can move along with the products!

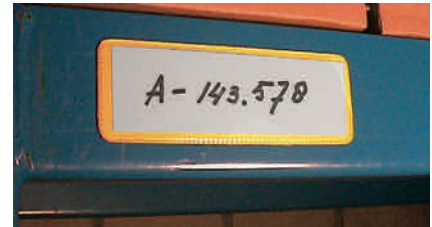
- Available in white (other colours available upon request)
- Available in different sizes (see table below – other sizes available upon request)
- Can be identified by writing on it or applying a self-adhesive label onto the magnetic material
- Packaging: 25

Article No.	Height (mm) x Width (mm)
234962	26.00 x 45.00
234963	26.00 x 77.00
234965	26.00 x 108.00
234966	26.00 x 159.00
234967	26.00 x 216.00
234968	38.50 x 45.00
234969	38.50 x 77.00
234970	38.50 x 108.00
234971	38.50 x 159.00
234972	38.50 x 216.00
234973	51.00 x 108.00
234974	51.00 x 159.00
234975	51.00 x 312.00
234978	77.00 x 108.00
234979	77.00 x 159.00
234980	77.00 x 312.00

SMALL POUCHES WITH MAGNETIC STRIPS

- Ideal for marking stock on metal racks in warehouses
- Magnetic strip on back of pouch for easy application
- Very suitable for goods that have no permanent bin location
- Packaging: 20

Article No.	Height (mm) x Width (mm)	Colour
Small Pouches with Magnetic Strips		
224050	30.00 x 100.00	Yellow
224051	40.00 x 120.00	Yellow
224052	58.00 x 100.00	Yellow
224053	58.00 x 137.00	Yellow
Cardboard Inserts		
224054	23.00 x 90.00	White
224055	33.00 x 110.00	White
224056	48.00 x 88.00	White
224057	50.00 x 128.00	White



LARGE POUCHES WITH MAGNETIC STRIPS

IDEAL FOR ATTACHING FORMS (TRANSPORT, STOCK, ETC.) TO METAL RACKS, CABINETS AND OTHER METAL SURFACES.

- Material: vinyl
- Packaging: 10 pouches (empty)

Article No.	Height (mm) x Width (mm)	Colour
224060	110.00 x 220.00	Blue
224059	157.00 x 220.00	Blue
224058	305.00 x 225.00	Blue



POUCHES WITH MAGNETIC LOOPS

THESE POUCHES HAVE TWO MAGNETICALLY CLOSING LOOPS AT THE TOP, MAKING THEM IDEAL TO ATTACH TO TROLLEYS AND PIPES.

- Packaging: 10 pouches (empty)

Article No.	Height (mm) x Width (mm)	Colour
224062	155.00 x 220.00	Blue
224061	295.00 x 230.00	Blue



Inspection Date Labels

STANDARD VINYL DATE LABELS

INSPECTION DATE LABELS CAN BE USED WHEREVER A FREQUENT AND REGULAR INSPECTION OF MACHINERY AND EQUIPMENT IS REQUIRED.

One example is the indication of the inspection date of the fire extinguishers. Simply mark the label with a hole punch (see next page) and apply wherever you need it!

Diameter (mm)	Labels per card
15.00	24
25.00	10
35.00	5



- Material: Vinyl Cloth (B-500)
- Packaging: 25 cards / pack
- Other sizes, colours and materials are available on request



Article No.	Legend	Colour	Diameter (mm)
813089	17	17	15.00
813120	17	17	25.00
813090	17	17	35.00
813091	18	18	15.00
813092	18	18	25.00
813093	18	18	35.00
833955	19	19	15.00
833956	19	19	25.00
833957	19	19	35.00
833958	20	20	15.00
833959	20	20	25.00
833960	20	20	35.00
833961	21	21	15.00
833962	21	21	25.00
833963	21	21	35.00
833964	22	22	15.00
833965	22	22	25.00
833966	22	22	35.00
833967	23	23	15.00
833968	23	23	25.00
833969	23	23	35.00
833970	24	24	15.00
833971	24	24	25.00
833972	24	24	35.00
833973	25	25	15.00
833974	25	25	25.00
833975	25	25	35.00
833976	26	26	15.00
833977	26	26	25.00
833978	26	26	35.00
833979	27	27	15.00
833980	27	27	25.00
833981	27	27	35.00
833982	28	28	15.00
833983	28	28	25.00
833984	28	28	35.00
833985	29	29	15.00
833986	29	29	25.00
833987	29	29	35.00
833988	30	30	15.00
833989	30	30	25.00
833990	30	30	35.00



Article No.	Legend	Colour	Diameter (mm)
813094	2017	2017	15.00
813095	2017	2017	25.00
813096	2017	2017	35.00
813097	2018	2018	15.00
813098	2018	2018	25.00
813099	2018	2018	35.00
834091	2019	2019	15.00
834092	2019	2019	25.00
834093	2019	2019	35.00
834094	2020	2020	15.00
834095	2020	2020	25.00
834096	2020	2020	35.00
834097	2021	2021	15.00
834098	2021	2021	25.00
834099	2021	2021	35.00
834100	2022	2022	15.00
834101	2022	2022	25.00
834102	2022	2022	35.00
834103	2023	2023	15.00
834104	2023	2023	25.00
834105	2023	2023	35.00
834106	2024	2024	15.00
834107	2024	2024	25.00
834108	2024	2024	35.00
834109	2025	2025	15.00
834110	2025	2025	25.00
834111	2025	2025	35.00
834112	2026	2026	15.00
834113	2026	2026	25.00
834114	2026	2026	35.00
834115	2027	2027	15.00
834116	2027	2027	25.00
834117	2027	2027	35.00
834118	2028	2028	15.00
834119	2028	2028	25.00
834120	2028	2028	35.00
834121	2029	2029	15.00
834122	2029	2029	25.00
834123	2029	2029	35.00
834124	2030	2030	15.00
834125	2030	2030	25.00
834126	2030	2030	35.00

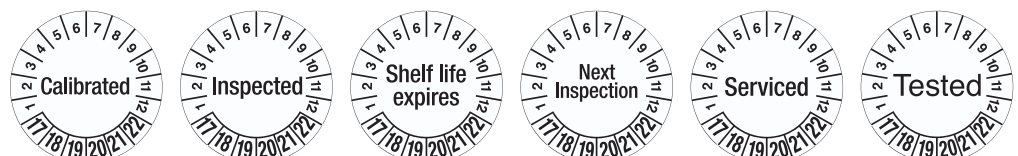


Article No.	Legend	Colour	Diameter (mm)
833991	17/18	17 18	25.00
833992	17/18	17 18	35.00
833993	18/19	18 19	25.00
833994	18/19	18 19	35.00
833995	19/20	19 20	25.00
833996	19/20	19 20	35.00
833997	20/21	20 21	25.00
833998	20/21	20 21	35.00
833999	21/22	21 22	25.00
834000	21/22	21 22	35.00
834001	22/23	22 23	25.00
834002	22/23	22 23	35.00
834003	23/24	23 24	25.00
834004	23/24	23 24	35.00
834005	24/25	24 25	25.00
834006	24/25	24 25	35.00
834007	25/26	25 26	25.00
834008	25/26	25 26	35.00
834009	26/27	26 27	25.00
834010	26/27	26 27	35.00
834011	27/28	27 28	25.00
834012	27/28	27 28	35.00
834013	28/29	28 29	25.00
834014	28/29	28 29	35.00
834015	29/30	29 30	25.00
834016	29/30	29 30	35.00

BRADY
Customise-it

Other sizes, colors and materials are available on request.

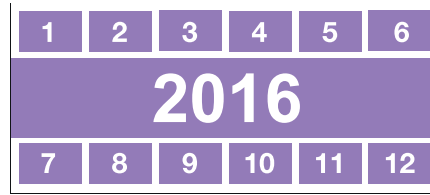
Article No.	Legend	Diameter (mm)
255911	Calibrated	25.00
255912	Calibrated	35.00
255917	Inspected	25.00
255918	Inspected	35.00
255913	Next Inspection	25.00
255914	Next Inspection	35.00
255915	Serviced	25.00
255916	Serviced	35.00
255919	Shelf life expires	25.00
255920	Shelf life expires	35.00
255909	Tested	25.00
255910	Tested	35.00



RECTANGULAR VINYL DATE LABELS

- Material: Vinyl Cloth (B-500)
- Packaging: 25 labels / card - 9 cards / pack

Article No.	Legend	Colour	Height (mm) x Width (mm)
834273	2017	2017	25.00 x 57.00
834274	2018	2018	25.00 x 57.00
834275	2019	2019	25.00 x 57.00
834276	2020	2020	25.00 x 57.00
834277	2021	2021	25.00 x 57.00
834278	2022	2022	25.00 x 57.00
834279	2023	2023	25.00 x 57.00
834280	2024	2024	25.00 x 57.00
834281	2025	2025	25.00 x 57.00
834282	2026	2026	25.00 x 57.00
834283	2027	2027	25.00 x 57.00
834284	2028	2028	25.00 x 57.00
834285	2029	2029	25.00 x 57.00
834286	2030	2030	25.00 x 57.00

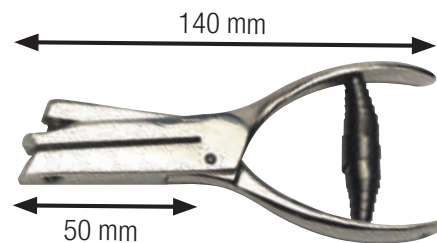


HOLE PUNCH

IDEAL TO PUNCH EXPIRE DATE LABELS.

- Made of superior quality nickel-plated steel
- Punches documents of up to 1.5 mm thick
- The design of the pair of tongs (50 mm wide) enables you to punch the middle of cards of up to 100 mm wide
- A range of over 40 shapes and characters allow easy identification of all the people performing the inspection

Article No.	Description
225053	Round hole punch
225054	Square hole punch
275065	Triangular hole punch



BRADY
Customise-it

Other sizes, colours and materials are available on request.



TAMPER-EVIDENT DATE LABELS

- Material: Polyolefin (B-429) is designed to fragment upon removal, which makes it impossible to remove a date label without leaving clear proof of tampering
- Packaging: 1 Sheet(s)
- Other sizes are available on request

Diameter (mm)	Labels per sheet
10.00	104
15.00	40
20.00	28
30.00	15

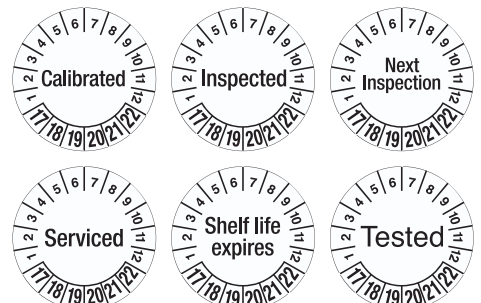


Article No.	Legend	Colour	Diameter (mm)
813102	17		10.00
813103	17	17	15.00
813104	17		20.00
813105	17		30.00
813106	18		10.00
813107	18	18	15.00
813108	18		20.00
813109	18		30.00
834017	19		10.00
834018	19	19	15.00
834019	19		20.00
834020	19		30.00
834021	20		10.00
834022	20	20	15.00
834023	20		20.00
834024	20		30.00
834025	21		10.00
834026	21	21	15.00
834027	21		20.00
834028	21		30.00
834029	22		10.00
834030	22	22	15.00
834031	22		20.00
834032	22		30.00
834033	23		10.00
834034	23	23	15.00
834035	23		20.00
834036	23		30.00
834037	24		10.00
834038	24	24	15.00
834039	24		20.00
834040	24		30.00
834041	25		10.00
834042	25	25	15.00
834043	25		20.00
834044	25		30.00
834045	26		10.00
834046	26	26	15.00
834047	26		20.00
834048	26		30.00
834049	27		10.00
834050	27	27	15.00
834051	27		20.00
834052	27		30.00
834053	28		10.00
834054	28	28	15.00
834055	28		20.00
834056	28		30.00
834057	29		10.00
834058	29	29	15.00
834059	29		20.00
834060	29		30.00
834061	30		10.00
834062	30	30	15.00
834063	30		20.00
834064	30		30.00

Article No.	Legend	Colour	Diameter (mm)
813110	2017		10.00
813111	2017	2017	15.00
813112	2017		20.00
813113	2017		30.00
813114	2018		10.00
813115	2018	2018	15.00
813116	2018		20.00
813117	2018		30.00
834127	2019		10.00
834128	2019	2019	15.00
834129	2019		20.00
834130	2019		30.00
834131	2020		10.00
834132	2020	2020	15.00
834133	2020		20.00
834134	2020		30.00
834135	2021		10.00
834136	2021	2021	15.00
834137	2021		20.00
834138	2021		30.00
834139	2022		10.00
834140	2022	2022	15.00
834141	2022		20.00
834142	2022		30.00
834143	2023		10.00
834144	2023	2023	15.00
834145	2023		20.00
834146	2023		30.00
834147	2024		10.00
834148	2024	2024	15.00
834149	2024		20.00
834150	2024		30.00
834151	2025		10.00
834152	2025	2025	15.00
834153	2025		20.00
834154	2025		30.00
834155	2026		10.00
834156	2026	2026	15.00
834157	2026		20.00
834158	2026		30.00
834159	2027		10.00
834160	2027	2027	15.00
834161	2027		20.00
834162	2027		30.00
834163	2028		10.00
834164	2028	2028	15.00
834165	2028		20.00
834166	2028		30.00
834167	2029		10.00
834168	2029	2029	15.00
834169	2029		20.00
834170	2029		30.00
834171	2030		10.00
834172	2030	2030	15.00
834173	2030		20.00
834174	2030		30.00

Article No.	Legend	Colour	Diameter (mm)
834065	17/18		20.00
834066	17/18	17 18	30.00
834067	18/19		20.00
834068	18/19	18 19	30.00
834069	19/20		20.00
834070	19/20	19 20	30.00
834071	20/21		20.00
834072	20/21	20 21	30.00
834073	21/22		20.00
834074	21/22	21 22	30.00
834075	22/23		20.00
834076	22/23	22 23	30.00
834077	23/24		20.00
834078	23/24	23 24	30.00
834079	24/25		20.00
834080	24/25	24 25	30.00
834081	25/26		20.00
834082	25/26	25 26	30.00
834083	26/27		20.00
834084	26/27	26 27	30.00
834085	27/28		20.00
834086	27/28	27 28	30.00
834087	28/29		20.00
834088	28/29	28 29	30.00
834089	29/30		20.00
834090	29/30	29 30	30.00

Article No.	Legend	Diameter (mm)
255996	Calibrated	20.00
255997	Calibrated	30.00
255923	Inspected	20.00
255924	Inspected	30.00
255998	Next Inspection	20.00
255999	Next Inspection	30.00
255921	Serviced	20.00
255922	Serviced	30.00
255925	Shelf life expires	20.00
255926	Shelf life expires	30.00
255994	Tested	20.00
255995	Tested	30.00



POLYESTER DATE LABELS

INSPECTION DATE LABELS CAN BE USED WHEREVER A FREQUENT AND REGULAR INSPECTION OF MACHINERY AND EQUIPMENT IS REQUIRED.

One example is the indication of the inspection date of the fire extinguishers. Simply mark the label with a hole punch (see page 15) and apply wherever you need it!

- Material: Laminated Polyester (B-7541)
- Packaging: 25 cards / pack

Diameter (mm)	Labels per card
25.00	7
35.00	5



Article No.	Legend	Colour	Diameter (mm)
834790	2017	2017	25.00
834808	2017	2017	35.00
834791	2018	2018	25.00
834809	2018	2018	35.00
834792	2019	2019	25.00
834810	2019	2019	35.00
834793	2020	2020	25.00
834811	2020	2020	35.00
834794	2021	2021	25.00
834812	2021	2021	35.00
834795	2022	2022	25.00
834813	2022	2022	35.00
834796	2023	2023	25.00
834814	2023	2023	35.00
834797	2024	2024	25.00
834815	2024	2024	35.00
834798	2025	2025	25.00
834816	2025	2025	35.00
834799	2026	2026	25.00
834817	2026	2026	35.00
834800	2027	2027	25.00
834818	2027	2027	35.00
834801	2028	2028	25.00
834819	2028	2028	35.00
834802	2029	2029	25.00
834820	2029	2029	35.00
834803	2030	2030	25.00
834821	2030	2030	35.00

Article No.	Legend	Colour	Diameter (mm)
834826	17/18	17 18	25.00
834843	17/18	17 18	35.00
834827	18/19	18 19	25.00
834844	18/19	18 19	35.00
834828	19/20	19 20	25.00
834845	19/20	19 20	35.00
834829	20/21	20 21	25.00
834846	20/21	20 21	35.00
834830	21/22	21 22	25.00
834847	21/22	21 22	35.00
834831	22/23	22 23	25.00
834848	22/23	22 23	35.00
834832	23/24	23 24	25.00
834849	23/24	23 24	35.00
834833	24/25	24 25	25.00
834850	24/25	24 25	35.00
834834	25/26	25 26	25.00
834851	25/26	25 26	35.00
834835	26/27	26 27	25.00
834852	26/27	26 27	35.00
834836	27/28	27 28	25.00
834853	27/28	27 28	35.00
834837	28/29	28 29	25.00
834854	28/29	28 29	35.00
834838	29/30	29 30	25.00
834855	29/30	29 30	35.00

BRADY
Customise-it

Other sizes, colours and materials are available on request.



Write-on labels

ACCEPTED

BY _____ DATE _____

INSPECTED BY:

DATE _____

REJECTED DATE _____

REASON _____

BY _____

RE-WORK DATE _____

BY: _____

REASON: _____

TESTED

DATE _____ INITIALS _____

SCRAPPED

DATE _____

INITIALS _____

CERTIFICATION

BY _____ DATE _____

DUE _____

CHECKED

BY _____

DATE _____

PROPERTY TAG

ASSET NO. _____

STOCK NO.

SERIAL NO.

QUALITY CONTROL

- Labels per card: 14
- Card dimensions: 50.80 x 228.60 mm
- Packaging: 25 cards
- Custom products on request

Article No.	Legend	Height (mm) x Width (mm)	Colour
B-184: Aluminium Foil			
035102	ACCEPTED	16.00 x 38.00	Green on Silver
B-500: Vinyl Cloth			
035002	ACCEPTED	16.00 x 38.00	Green on White
035042	CERTIFICATION	16.00 x 38.00	Black on White
256028	CHECKED	16.00 x 38.00	Green on White
035052	INSPECTED BY	16.00 x 38.00	Black on White
035001	REJECTED	16.00 x 38.00	Red on White
256012	RE-WORK	16.00 x 38.00	Black on White
256013	SCRAPPED	16.00 x 38.00	Red on White
035038	TESTED	16.00 x 38.00	Green on White

INVENTORY

- Labels per card: 18
- Card dimensions: 50.80 x 228.60 mm
- Packaging: 25 cards
- Custom products on request

Article No.	Legend	Height (mm) x Width (mm)	Colour
B-184: Aluminium Foil			
035129	PROPERTY TAG	13.00 x 38.00	Black on Silver
035134	SERIAL NO.	13.00 x 38.00	Black on Silver
B-500: Vinyl Cloth			
035034	SERIAL NO.	13.00 x 38.00	Black on White
035037	STOCK NO.	13.00 x 38.00	Green on White

BRADY Customise-it

Other sizes, colours and materials are available on request.



PENS

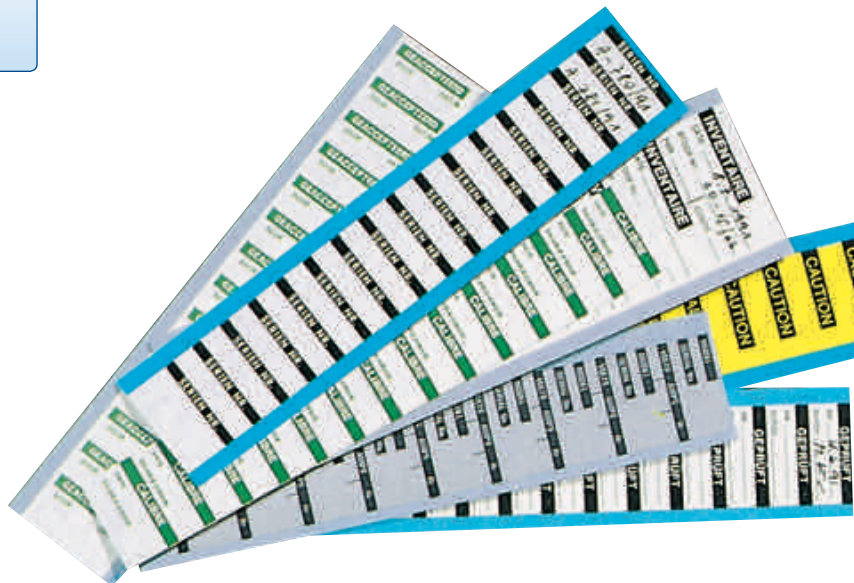
Article No.	Description	Colour	Quantity
055500	Pen - Ultra Fine (solvent based)	Black	1
055508	Pen - Fine (solvent based)	Black	1
335091	Pen - Fine	Black	1
335092	Pen - Ultra Fine	Black	1



Pen - Fine
Pen - Ultra Fine



Pen - Ultra Fine (solvent based)
Pen - Fine (solvent based)



MAINTENANCE

- Card dimensions:
50.50 x 228.60 mm for labels of 38.00 x 16.00 mm
70.00 x 229.00 mm for labels of 57.00 x 25.00 mm
- Packaging: 25 cards
- Custom products on request

Article No.	Legend	Height (mm) x Width (mm)	Colour	Quantity
B-184: Aluminium Foil				
035118	Do not use after	16.00 x 38.00	Red on Silver	14
235075	Serial No. / Model No.	37.00 x 57.00	Black on White	6
B-500: Vinyl Cloth				
035017	Date installed	16.00 x 38.00	Black on White	14
035018	Do not use after	16.00 x 38.00	Red on White	14
035031	REPAIRED BY	16.00 x 38.00	Orange on White	14

SERIAL NO.			
MODEL NO.			
VOLTS	AC-DC	AMPS	HERTZ

DO NOT USE
AFTER _____

DATE INSTALLED
BY _____

REPAIRED BY
INITIALS _____
DATE _____

BRADY Customise-it

Other sizes, colours and materials are available on request.

CALIBRATION

- Card dimensions:
50.80 x 228.60 mm for labels of 38.00 x 13.00 mm
50.50 x 228.60 mm for labels of 38.00 x 16.00 mm and 38.00 x 38.10 mm
- Packaging: 25 cards
- Custom products on request

CALIBRATED
EXPIRES _____
IDENT. NO. _____
ACCURACY _____
DATE CAL. _____
BY _____
DEPT. NO. _____

CALIBRATED
BY _____ DATE _____
DUE _____

DO NOT USE Until Tested & Calibrated
--

CALIBRATION
BY _____ DATE _____
DUE _____

CALIBRATION NOT REQUIRED

Article No.	Legend	Height (mm) x Width (mm)	Colour	Quantity
B-184: Aluminium Foil				
035153	Calibration not required	13.00 x 38.00	Red on Silver	18
035110	Calibration	16.00 x 38.00	Green on Silver	14
B-500: Vinyl Cloth				
035053	Calibration not required	13.00 x 38.00	Red on White	18
035010	Calibration	16.00 x 38.00	Green on White	14
035041	CALIBRATED	16.00 x 38.00	Black on White	14
035051	Do not use until tested & calibrated	16.00 x 38.00	Black on Yellow	14
035063	CALIBRATED	38.10 x 38.00	Black on White	6

PENS

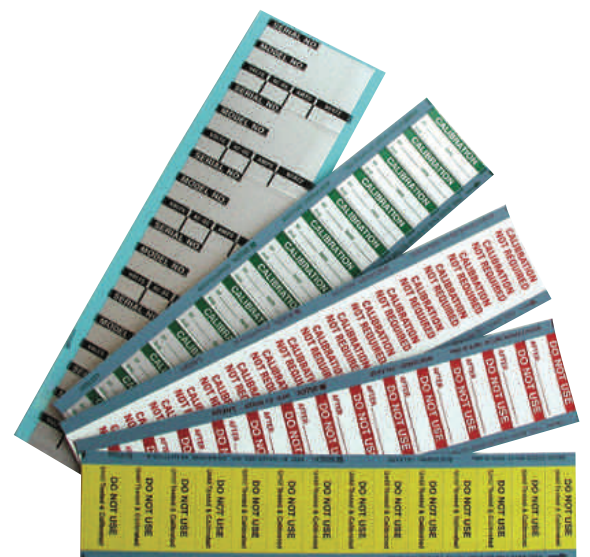
Article No.	Description	Colour	Quantity
055500	Pen - Ultra Fine (solvent based)	Black	1
055508	Pen - Fine (solvent based)	Black	1
335091	Pen - Fine	Black	1
335092	Pen - Ultra Fine	Black	1



Pen - Fine
Pen - Ultra Fine



Pen - Ultra Fine (solvent based)
Pen - Fine (solvent based)



BLANK WRITE-ON LABELS

- Packaging: per pack of 25 cards

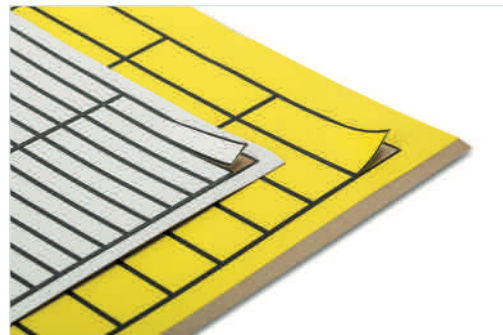
Article No.	Height (mm) x Width (mm)	Colour	Quantity/Pack
B-184 : Aluminium Foil			
035146	6.00 x 38.00	Silver	36/Pack
035130	11.00 x 38.00	Silver	20/Pack
035124	16.00 x 38.00	Silver	14/Pack
035119	25.00 x 38.00	Silver	9/Pack
B-500 : Vinyl Cloth			
035048	13.00 x 13.00	White	54/Pack
035050	19.00 x 13.00	White	36/Pack
035047	6.00 x 19.00	White	72/Pack
035046	6.00 x 38.00	White	36/Pack
035035	9.00 x 38.00	White	25/Pack
035030	11.00 x 38.00	White	20/Pack
035049	13.00 x 38.00	White	18/Pack
035024	16.00 x 38.00	Yellow	14/Pack
035019	25.00 x 38.00	White	9/Pack
035016	38.00 x 38.00	White	6/Pack
035068	13.00 x 57.00	White	18/Pack
035062	19.00 x 57.00	Yellow	12/Pack
035059	25.00 x 57.00	White	9/Pack
035056	38.00 x 57.00	White	6/Pack
035054	57.00 x 57.00	White	4/Pack



BLANK WRITE-ON LABELS ON SHEETS

- Material: B-500 Vinyl Cloth
- Packaging: 25 sheets

Article No.	Height (mm) x Width (mm)	Quantity
Black border on White		
101811	11.00 x 19.00	189/Sheet(s)
101812	11.00 x 38.00	80/Sheet(s)
101813	14.00 x 42.00	68/Sheet(s)
101814	22.00 x 56.00	30/Sheet(s)
101815	10.00 x 65.00	69/Sheet(s)
Black border on Yellow		
101817	9.00 x 15.00	324/Sheet(s)
101807	11.00 x 19.00	189/Sheet(s)
101816	8.00 x 20.00	270/Sheet(s)
101890	11.00 x 28.00	126/Sheet(s)
101808	11.00 x 38.00	80/Sheet(s)
101809	22.00 x 56.00	30/Sheet(s)
101810	35.00 x 60.00	21/Sheet(s)
Yellow		
101804	9.00 x 15.00	324/Sheet(s)
101805	11.00 x 19.00	189/Sheet(s)
101803	8.00 x 20.00	270/Sheet(s)
101806	11.00 x 38.00	80/Sheet(s)
235083	22.00 x 56.00	30/Sheet(s)



MAINTENANCE & SERVICE LABELS

- Material: B-7586 Vinyl
- Packaging: 4 labels / card - 10 cards / pack

Article No.	Legend	Height (mm) x Width (mm)	Colour
B-7586: Vinyl			
256900	INSPECTED	95.00 x 40.00	Black on White
256901	SERVICED	95.00 x 40.00	Black on White
256902	GOODS RECEIVED	95.00 x 40.00	Black on White

INSPECTED

Date.....
Comments.....
Signed.....

NEXT INSPECTION

Place your date label here

SERVICED

Date.....
Comments.....
Signed.....

NEXT SERVICE

Place your date label here

GOODS RECEIVED

Date.....
Comments.....
Signed.....

SHELF LIFE EXPIRES

Place your date label here

INSPECTION PLACARDS

- Material: B-7586 Vinyl
- Packaging: 10

Article No.	Legend	Height (mm) x Width (mm)	Colour
B-7586: Vinyl			
256906	CALIBRATION RECORD	150.00 x 100.00	Green on White
256907	INSPECTION RECORD	150.00 x 100.00	Black on White
256910	-	150.00 x 100.00	Black on White

CALIBRATION RECORD

DATE	BY	NEXT DUE

INSPECTION RECORD

DATE	BY	NEXT DUE

DATE		

- Material: Polyester (B-870), resists well to oil, grease, water, etc. Can be completed by using any pen
- Packaging: pack of 10 tags + one cable tie per tag

EQUIPMENT INSPECTION TAGS

- Size: 100.00 mm x 175.00 mm

Article No.	Legend	Colour
256507	-	Black on White
256504	CALIBRATION RECORD	Black on Yellow
256509	LUBRICATION RECORD	Black on Yellow
256508	MAINTENANCE RECORD	Black on Yellow
256510	PART REPLACEMENT RECORD	Black on White
256500	REPAIR ORDER	White on Red

QUALITY & MATERIAL CONTROL TAGS

- Size: 150.00 mm x 75.00 mm

Article No.	Legend	Colour
230390	-	White
230391	-	Yellow
256512	ACCEPTED	Green on White
256513	CALIBRATED	Black on White
256553	CALIBRATED	Black on White
256561	DO NOT USE	White on Red
256518	EQUIPMENT NOT TO BE USED	Red on White
256545	REPAIR	White on Orange
256517	REPAIRED BY	Orange on White
256549	RETURN TO VENDOR	White on Orange
256537	SPECIAL INSTRUCTIONS	Black on Yellow
256551	TESTED	Green on White

PENS

Article No.	Description	Colour	Quantity
055500	Pen - Ultra Fine (solvent based)	Black	1
055508	Pen - Fine (solvent based)	Black	1
335091	Pen - Fine	Black	1
335092	Pen - Ultra Fine	Black	1



Pen - Fine
Pen - Ultra Fine

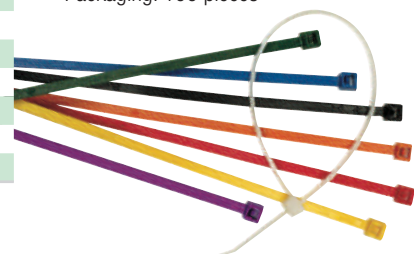


Pen - Ultra Fine (solvent based)
Pen - Fine (solvent based)

COLOURED NYLON TIES

Article No.	Colour
229955	White
229956	Blue
229957	Red
229958	Orange
229959	Yellow
229960	Green
229961	Violet
229962	Black

- Size: 200 mm x 4 mm
- Material: nylon
- Packaging: 100 pieces





BMP™21 LABEL PRINTER

Simple to operate and quick to print, the BMP21 is a labelling tool specifically designed for industrial environments. Several types of material in cartridges provides flexibility in usage wherever you need a durable label.

- 203 dpi printing resolution
- Prints on continuous tapes up to 19 mm wide

i For more information about kits, please contact your nearest Brady representative.

Article No.	Description
110889	BMP21 Label Printer
710537	BMP21 Safety Kit EU
710538	BMP21 Safety Kit UK
710662	BMP21 Label Printer Cyrillic



BMP™51 LABEL MAKER

The Brady BMP51 Label Maker offers crisp printing, easy formatting, convenient label sizes and portability to complete a number of identification tasks. Besides stand-alone and PC connected operation, it offers wireless printing via Bluetooth® and WiFi.

- 300 dpi printing resolution
- Prints on labels and tapes up to 38 mm wide

Article No.	Description
710898	BMP51 Label Printer - UK
710894	BMP51 Printer with Battery Pack - AC Adaptor/Battery Charger EU



BMP™71 LABEL PRINTER

The BMP71 is a high-end user friendly portable label printer with a large full colour LCD display, an easy-to-use menu driven user interface, and a full QWERTY keyboard layout making it quick and easy to create labels using text, symbols and coding. It can be used as a stand-alone unit, or in connection with a PC.

- 300 dpi printing resolution
- Prints on labels and tapes up to 50.8 mm wide

Article No.	Description
710599	BMP71 Label Printer - QWERTY EU
710600	BMP71 Label Printer - QWERTY UK
710601	BMP71 Label Printer - AZERTY
710603	BMP71 Label Printer - QWERTZ
710604	BMP71 Label Printer - CYRILLIC



BBP™31 AND BBP™33 SIGN AND LABEL PRINTER

Designed for ease of use and versatility, this monochrome printer features an intuitive touch screen display (BBP™31), simple label design and a wide variety of materials and applications.

Coined as "2-step printing," this printer enables anyone to create labels without prior training. Simply type the desired text and hit the print button. With true "walk-up-and-print" functionality, everything that needs to be labelled in a facility actually gets labelled.

- 300 dpi printing resolution
- Prints on labels and tapes from 12.70 wide to 101 mm wide

Article No.	Description
710731	BBP31 Sign and Label Printer QWERTY - UK
710737	BBP31 Sign and Label Printer QWERTY - EU
710738	BBP31 Sign and Label Printer QWERTZ
710739	BBP31 Sign and Label Printer AZERTY
710740	BBP31 Sign and Label Printer CYRILLIC
711071	BBP33 Label Printer - EU
711075	BBP33 Label Printer - UK



BBP™35 MULTICOLOUR SIGN & LABEL PRINTER BBP™37 MULTICOLOUR & CUT SIGN & LABEL PRINTER

Because safety and productivity mean the world to you, it's time to step up to the new standard by creating signs and labels that demand attention. After all, effective workplace visuals make all the difference in taking your facility to the next level by giving employees the information they need right at a glance.

And now there's a tool to do it all!

Brady's BBP35 and BBP37 sign and label printers give you the power to make signs and labels in the colours and shapes you need to make an impact – right at your own facility and right when you need them. With remarkable multi-colour printing, versatile shape-cutting capabilities and impressively fast print speeds, you won't remember how you lived without one of these printers.

- Print signs and labels that are more noticeable, more memorable and more effective
- Colour is the differentiator when you need to effectively improve workplace safety and productivity

Article No.	Description
143633	BBP35 Multicolour Sign and Label Printer QWERTY - US
143634	BBP35 Multicolour Sign and Label Printer QWERTY - EU
143635	BBP35 Multicolour Sign and Label Printer AZERTY
143636	BBP35 Multicolour Sign and Label Printer QWERTZ
143637	BBP35 Multicolour Sign and Label Printer CYRILLIC
143638	BBP37 Multicolour and Cut Sign and Label Printer QWERTY - US
143639	BBP37 Multicolour and Cut Sign and Label Printer QWERTY - EU
143640	BBP37 Multicolour and Cut Sign and Label Printer AZERTY
143641	BBP37 Multicolour and Cut Sign and Label Printer QWERTZ
143642	BBP37 Multicolour and Cut Sign and Label Printer CYRILLIC
145995	BBP37 Multicolour and Cut Sign and Label Printer QWERTY - UK
145996	BBP35 Multicolour Sign and Label Printer QWERTY - UK



BBP™85 SIGN & LABEL PRINTER

The BBP™85 Sign and Label Printer is a thermal transfer 300 dpi benchtop printer to create bold, multi-coloured custom visuals up to 254 mm wide. It features a large touchscreen and intuitive, easy to use interface, allowing anyone to create signs quickly and easily. The printer has a broad selection of material options, including vinyl, polyester, reflective, glow-in-the-dark and pre-printed sign headers. With true "walk up and print ease of use, instantly create high quality, multi-coloured eye-catching visuals.

- Stand-alone unit or connected to PC using MarkWare™ Facility Identification Software
- 300 printing resolution
- Prints on labels and tapes from 101.60 mm wide to 254 mm wide

Article No.	Description
711190	BBP85 Sign and Label Printer QWERTZ with MarkWare Software
711191	BBP85 Sign and Label Printer CYRILLIC with MarkWare Software
711192	BBP85 Sign and Label Printer AZERTY with MarkWare Software
711193	BBP85 Sign and Label Printer QWERTY - EU with MarkWare Software
711194	BBP85 Sign and Label Printer QWERTY - UK with MarkWare Software



MARKWARE™ FACILITY IDENTIFICATION SOFTWARE

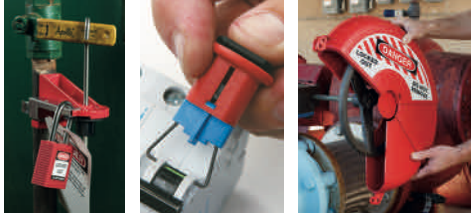
Ideal tool to quickly design professional looking signs, labels and tags. The MarkWare template wizard walks you through the creation process step by step, making it easy to use without training or reading the manual. From simple labels to complex signs, MarkWare does it all - no need to learn and maintain different software programs.

Article No.	Description
710669	MarkWare Industrial Signmaking Software



BRADY - YOUR COMPLETE WORK SAFETY SOLUTION PROVIDER

Find out more about safety products from our extensive portfolio. Visit our websites or contact your nearest Brady representative.



LOCKOUT TAGOUT - SOLUTIONS FOR HAZARDOUS ENERGY CONTROL

From audit and identification of energy control points, through procedure creation and the selection of adequate products, up to employee training and safety awareness promotion – Brady offers full support and a broad range of products to create your advanced work safety environment.



VISUAL TAGGING SOLUTIONS

Provide essential records of the safe condition of all your site equipment and scaffolding.

- Simple to implement
- Easy for workers to understand
- Specially designed for rough environments
- Highly visible



SAFETY SIGNS - IMPORTANT INFORMATION AT THE POINT OF NEED

We offer more than 8,000 different signs for safety, maintenance and facility identification.

- Designed to withstand even the harshest industrial environments
- Bright colours, bold text and intuitive pictograms
- Compliant with the latest standards and regulations
- Highly visible and easy to understand communication



PIPE MARKERS - EASILY IDENTIFY PIPE CONTENT AND FLOW DIRECTION

The correct identification of pipes ensures a better insight into a building's structure. Accidents, injuries and damage can be prevented.

BRADY® WHEN PERFORMANCE MATTERS MOST™

Africa

Randburg, South Africa
Tel.: +27 11 704 3295
Email: africa@bradycorp.com

Benelux

Zelev, Belgium
Tel.: +32 (0) 52 45 78 11
Email: benelux@bradycorp.com

Central & Eastern Europe

Bratislava, Slovakia
Tel.: +421 2 3300 4800
Email: central_europe@bradycorp.com

Denmark

Odense
Tel.: +45 66 14 44 00
Email: denmark@bradycorp.com

France

Roncq
Tel.: +33 (0) 3 20 76 94 48
Email: france@bradycorp.com

Germany, Austria & Switzerland

Egelsbach, Germany
Tel.: +49 (0) 6103 7598 660
Email: germany@bradycorp.com

Hungary

Budaörs
Tel.: +36 23 500 275
Email: central_europe@bradycorp.com

Italy

Gorgonzola
Tel.: +39 02 26 00 00 22
Email: italy@bradycorp.com

Middle East FZE

Dubai, UAE
Tel.: +971 4881 2524
Email: me@bradycorp.com

Norway

Kjeller
Tel.: +47 70 13 40 00
Email: norway@bradycorp.com

Romania

Bucharest
Tel.: +40 21 202 3032
Email: central_europe@bradycorp.com

Russia

Moscow
Tel.: +7 495 269 47 87
Email: central_europe@bradycorp.com

Spain & Portugal

Madrid, Spain
Tel.: +34 900 902 993
Email: spain@bradycorp.com,
portugal@bradycorp.com

Sweden

Kista
Tel.: +46 (0) 8 590 057 30
Email: sweden@bradyeurope.com

Turkey

Istanbul
Tel.: +90 212 264 02 20 / 264 02 21
Email: turkey@bradycorp.com

UK & Ireland

Banbury, UK
Tel.: +44 (0) 1295 228 288
Email: uk@bradycorp.com



To help minimise our impact on the environment, Brady limits its number of reprints. Updated versions are always available for download on www.bradyeurope.com.

Search for: EUR-M-424-EN

© 2017 Brady Worldwide, Inc. All Rights Reserved.

Your distributor

19/09/2017