

Area Marking

Area Marking: Why?

Creating a totally safe work environment requires several elements: clear signage and lockout tagout procedures are essential but should be complimented by clear area marking. Brady offers a complete range of additional marking methods to ensure that floor areas, steps, railings and other relevant areas can be identified as danger zones.

Brady will help you find the solution that works best for your environment!



Floor marking tape



Photoluminescent area marking



Anti-skid products



Barricade tape



Warning posts and chains



CONTENT

Area Marking: Why?	2
ToughStripe Removable Area Marking Tape	3
Tape	4
Arrows	4
Dots	4
Footprints	5
Corner Marks, Divider Marks, Centre Marks.	5, 6
Pre-spaced Shapes	6
ToughStripe for use with the BMP™71 Label Printer	6
Permanent Area Marking Tape	7
Warning Tapes	7
Durable Marking Tapes	7
Reflective Stripes and Solid Colours Tapes.	7
Aisle Marking Tapes	8
Warning Panels	8
Easyline™ Floor Marking Paint for industrial marking	8
Photoluminescent Area Marking	9
Warning Tapes & Warning Tapes With Legends	9
Footprints	10
Arrows	10, 11
Dots	10, 11
Door Handle Backgrounds	10
Stair Markers	11
Warning Tapes & Strips	12
Door Marking Tapes & Strips	12
Anti-Skid Products	12
Photoluminescent Anti-Skid Strips.	12
Roll-Mounted Anti-Skid Tape	13
Die-Cut Cleats	13
Anti-Skid Reflective & Glow-in-the-dark Die-Cut Cleats	13
Hazard Marking Die-Cut Cleats	13
Striped Anti-Skid Tape	13
Barricade Tape	14
Barricade Tapes.	14
Super Strong Barricade Tape	14
Underground Warning Tape	15
Warning Posts & Chains	16
BradyLink® Warning Post & Chain	16
Brady Warning Chain	16
Brady Connecting Hooks	16
Brady Connecting Links.	16
Warning Posts	17
Message Sign	17
Floor Stands	18
Heavy Duty Floor Stands	18
Economy Floor Stands.	18
Safety Bumpers	19
Polyurethane Safety Bumpers	19
Self-adhesive Safety Bumpers.	19



ToughStripe is the ideal floor marking tape in a lean environment where the regular application and replacement of floor marking is crucial.

Superior Durability

Spend less time replacing damaged or worn lines for a better looking, more efficient facility.

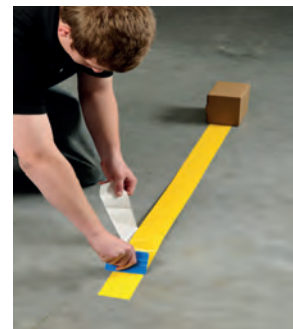
- Withstands forklift traffic without tearing or lifting
- Low profile design minimises tears and scratches from skids, pallet jacks, etc.
- Rugged polyester with ultra aggressive adhesive



Easy Application

Quickly lay down smooth, straight lines – without the help of co-workers.

- Can be easily applied by one person working alone
- Stiff polyester with liner prevents tape stretching and reduces wrinkles and wavy uneven lines
- No special floor preparation required – just clean with common detergents
- For maximum performance, apply ToughStripe Floor Marking products to flat, non-coated concrete



High Visibility

Get the same visibility of painted floor markings – and pay less.

- High gloss surface shines like new paint
- Low-profile minimises debris build-up along the edges that occurs with thicker (extruded) floor tapes
- Surface resists marks and smudges and cleans up like new
- Available in a variety of high impact colours



Die-Cut Shapes

Use different shapes, colours and sizes for more effective, durable floor markings.

- Dashes, dots, arrows, footprints, and corner marks (L, T and + shapes)
- Longer lasting markings – Minimises the risk of damage and facilitates fast repair
- **Selected dashes, dots and arrows are pre-spaced on transfer tape, making it incredibly easy to lay down straight evenly spaced lines**

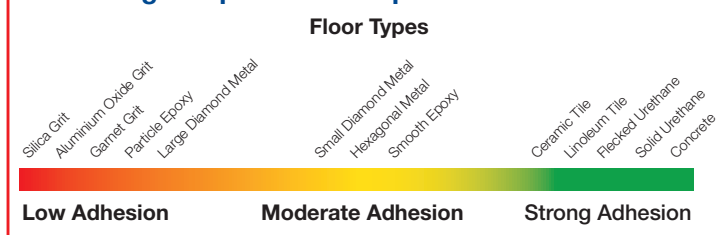


Painless Removal

Easily remove floor markings without damaging the floor or leaving adhesive residue.

- Does not chip and flake when being removed – comes off in one piece
- Clean removal without any unsightly adhesive residue or damage to the floor

ToughStripe™ Floor Tape Adhesion Rates



Request a sample to try ToughStripe in your own environment!

BRADY B-514 FLOOR MARKING POLYESTER

TOUGHSTRIPE™ FLOOR MARKING PRODUCTS ARE MADE WITH BRADY'S B-514 POLYESTER.

TOUGHSTRIPE PRODUCTS ARE IDEAL FOR MARKING AISLES, PASSAGEWAYS AND STORAGE LOCATIONS, AND POINTING OUT IMPORTANT SAFETY EQUIPMENT AND EGRESS PATHS.

- 0.2 mm thickness
- Service temperature range of -18°C to 54°C
- Application conditions: min. 5°C, dry floor
- Recommended for indoor use and dry environment
- Resistant to harsh chemicals
- Exceeds safety standards for clean, dry non-slip surfaces per OSHA 1910.22

FLOOR MARKING TAPE



Order Ref.	Width (mm)	Length (m)	Colour
104310	50.80	30.00 m	Black
104311	50.80	30.00 m	White
104312	50.80	30.00 m	Yellow
104313	50.80	30.00 m	Red
104314	50.80	30.00 m	Blue
104315	50.80	30.00 m	Green
104316	50.80	30.00 m	Orange
104317	50.80	30.00 m	Black & Yellow
104318	50.80	30.00 m	Red & White
104319	50.80	30.00 m	Black & White
104340	76.20	30.00 m	Black
104341	76.20	30.00 m	White
104342	76.20	30.00 m	Yellow
104343	76.20	30.00 m	Red
104344	76.20	30.00 m	Blue
104345	76.20	30.00 m	Green
104346	76.20	30.00 m	Orange
104347	76.20	30.00 m	Black & Yellow
104348	76.20	30.00 m	Red & White
104349	76.20	30.00 m	Black & White
104370	101.60	30.00 m	Black
104371	101.60	30.00 m	White
104372	101.60	30.00 m	Yellow
104373	101.60	30.00 m	Red
104374	101.60	30.00 m	Blue
104375	101.60	30.00 m	Green
104376	101.60	30.00 m	Orange
104377	101.60	30.00 m	Black & Yellow
104378	101.60	30.00 m	Red & White
104379	101.60	30.00 m	Black & White

Custom TOUGHSTRIPE TAPE

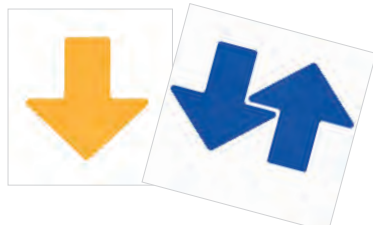
- Pre-printed tape with your custom message
- Die cut numbers and letters for safety, lean and other applications
- Specific die cut shape sizes
- Any colour you need, just provide a PMS number
- Striped or checkered tape available

CAUTION ESD AREA FLOOR MARKING TAPE



Order Ref.	Width (mm)	Length (m)	Colour
121367	50.80	30.00 m	Yellow
121368	76.20	30.00 m	Yellow
121369	101.60	30.00 m	Yellow

ARROWS - 100 / PACKAGE



Order Ref.	Width (mm)	Height (mm)	Colour
104412	50.80	127.00	Red
104413	50.80	127.00	Green
104414	50.80	127.00	Blue
104415	50.80	127.00	Yellow
104416	50.80	127.00	Black
104417	50.80	127.00	White
104418	76.20	203.20	Red
104419	76.20	203.20	Green
104420	76.20	203.20	Blue
104421	76.20	203.20	Yellow
104422	76.20	203.20	Black
104423	76.20	203.20	White
104424	101.60	254.00	Red
104425	101.60	254.00	Green
104426	101.60	254.00	Blue
104427	101.60	254.00	Yellow
104428	101.60	254.00	Black
104429	101.60	254.00	White

DOTS - 350 / ROLL



Order Ref.	Diameter (mm)	Colour
104400	88.90	Red
104401	88.90	Green
104402	88.90	Blue
104403	88.90	Yellow
104404	88.90	Black
104405	88.90	White

USE TOUGHSTRIPE FLOOR MARKING PRODUCTS TO MARK:

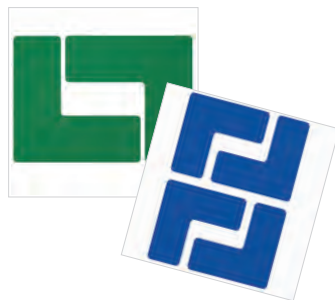
- Aisleways and traffic lanes
- Work cell outlines
- Equipment storage areas
- Material storage areas
- QA inspection areas
- Defects/scrap/rework areas
- "Keep clear" zones
- Hazard areas

FOOTPRINTS - 10 / PACKAGE (5 RIGHT - 5 LEFT)

Order Ref.	Width (mm)	Height (mm)	Colour
104406	88.90	254.00	Red
104407	88.90	254.00	Green
104408	88.90	254.00	Blue
104409	88.90	254.00	Yellow
104410	88.90	254.00	Black
104411	88.90	254.00	White

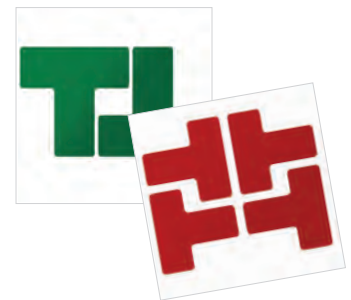


CORNER MARKS - "L" 20 / PACKAGE



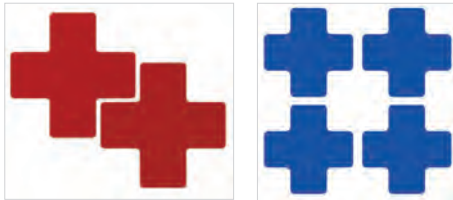
Order Ref.	Width (mm)	Height (mm)	Colour
104430	50.80	127.00	Red
104431	50.80	127.00	Green
104432	50.80	127.00	Blue
104433	50.80	127.00	Yellow
104434	50.80	127.00	Black
104435	50.80	127.00	White
104442	76.20	203.20	Red
104443	76.20	203.20	Green
104444	76.20	203.20	Blue
104445	76.20	203.20	Yellow
104446	76.20	203.20	Black
104447	76.20	203.20	White
104454	101.60	254.00	Red
104455	101.60	254.00	Green
104456	101.60	254.00	Blue
104457	101.60	254.00	Yellow
104458	101.60	254.00	Black
104459	101.60	254.00	White

DIVIDER MARKS - "T" 20/ PACKAGE



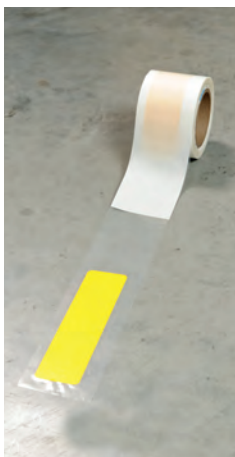
Order Ref.	Width (mm)	Height (mm)	Colour
104436	50.80	127.00	Red
104437	50.80	127.00	Green
104438	50.80	127.00	Blue
104439	50.80	127.00	Yellow
104440	50.80	127.00	Black
104441	50.80	127.00	White
104448	76.20	203.20	Red
104449	76.20	203.20	Green
104450	76.20	203.20	Blue
104451	76.20	203.20	Yellow
104452	76.20	203.20	Black
104453	76.20	203.20	White
104460	101.60	254.00	Red
104461	101.60	254.00	Green
104462	101.60	254.00	Blue
104463	101.60	254.00	Yellow
104464	101.60	254.00	Black
104465	101.60	254.00	White

CENTRE MARKS - “+” 20 / PACKAGE



Order Ref.	Width (mm)	Height (mm)	Colour	
104466	50.80	127.00	Red	+
104467	50.80	127.00	Green	+
104468	50.80	127.00	Blue	+
104469	50.80	127.00	Yellow	+
104470	50.80	127.00	Black	+
104471	50.80	127.00	White	+
104472	76.20	203.20	Red	+
104473	76.20	203.20	Green	+
104474	76.20	203.20	Blue	+
104475	76.20	203.20	Yellow	+
104476	76.20	203.20	Black	+
104477	76.20	203.20	White	+
104478	101.60	254.00	Red	+
104479	101.60	254.00	Green	+
104480	101.60	254.00	Blue	+
104481	101.60	254.00	Yellow	+
104482	101.60	254.00	Black	+
104483	101.60	254.00	White	+

PRE-SPACED SHAPES (SPACED 457 MM APART)



Order Ref.	Diameter (mm)	Width (mm)	Height (mm)	Colour	
104526	-	50.80	127.00	Red	→→→→
104527	-	50.80	127.00	Green	→→→→
104528	-	50.80	127.00	Blue	→→→→
104529	-	50.80	127.00	Yellow	→→→→
104554	-	50.80	127.00	Black	→→→→
104555	-	50.80	127.00	White	→→→→
104556	-	50.80	203.20	Yellow	→→→→
104520	88.90	-	-	Green	●●●●
104521	88.90	-	-	Red	●●●●
104522	88.90	-	-	White	●●●●
104523	88.90	-	-	Yellow	●●●●
104524	88.90	-	-	Blue	●●●●
104525	88.90	-	-	Black	●●●●

TOUGHSTRIPE FOR USE WITH THE BMP™71 LABEL PRINTER

B-483 TOUGHBOND™ ULTRA AGGRESSIVE POLYESTER INCLUSIVE A B-634 POLYESTER OVERLAMINATE ROLL.

- Create custom-printed floor labels
- Easy 3-Step Process: print label, position on floor, apply overlaminate



Order Ref.	Width (mm)	Length (m)	Colour	
142140	25.40	15.24 m	White	
142141	50.80	15.24 m	White	
142142	25.40	15.24 m	Black	
142143	50.80	15.24 m	Black	
142144	25.40	15.24 m	Yellow	
142145	50.80	15.24 m	Yellow	
142146	25.40	15.24 m	Red	
142147	50.80	15.24 m	Red	
142148	25.40	15.24 m	Blue	
142149	50.80	15.24 m	Blue	
142150	25.40	15.24 m	Green	
142151	50.80	15.24 m	Green	
142152	25.40	15.24 m	Orange	
142153	50.80	15.24 m	Orange	



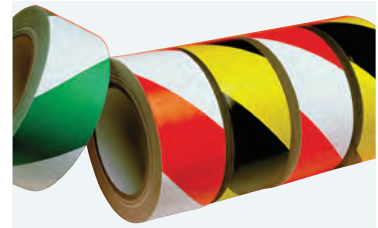
WARNING TAPES

- Self-adhesive warning film for marking pillars, pylons, the edges of walls, gate arches and lifts
- Extremely durable (0.138 mm thick)
- Waterproof, oil, alkali and acid resistant
- Material: Self-adhesive PVC
- Roll length: 33 m
- Packaging: 1 roll

Order Ref.	Width (mm)	Colour	
255311	38.00	Black & Yellow	
255312	50.00	Black & Yellow	
255313	75.00	Black & Yellow	
255295	38.00	Red & White	
255296	50.00	Red & White	
255297	75.00	Red & White	



Anti-skid Laminated Polyester (B-7538) custom tapes available on request.



DURABLE MARKING TAPE

COLOURS ARE SEALED BENEATH A PROTECTIVE LAYER OF ABRASION RESISTANT CLEAR LAMINATE.

- Aggressive adhesive holds on almost any clean, dry surface
- Markings stand up to toughest conditions - indoors or out
- Material: Self-adhesive vinyl (B-950)
- Standard Package: 1 roll
- Length: 16.5 m

Order Ref.	Width (mm)	Colour	
055290	25.00	Black & White	
055291	38.00	Black & White	
055292	50.00	Black & White	
055293	75.00	Black & White	
055300	25.00	Black & Yellow	
055301	38.00	Black & Yellow	
055302	50.00	Black & Yellow	
055303	75.00	Black & Yellow	

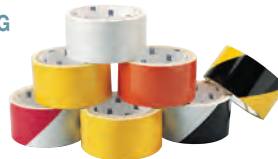
Order Ref.	Width (mm)	Colour	
055312	38.00	Magenta & Yellow	
055313	50.00	Magenta & Yellow	
055314	75.00	Magenta & Yellow	
055294	25.00	Red & White	
055295	38.00	Red & White	
055296	50.00	Red & White	
055297	75.00	Red & White	



REFLECTIVE STRIPES & SOLID COLOUR TAPES

THESE TAPES GIVE AN EXTRA MARGIN OF SAFETY DURING BLACKOUTS, AT NIGHT, OR IN LOW LIGHT CONDITIONS.

- Material: Reflective Adhesive Material (B-957)
- Length: 4.5 m
- Standard Package: 1 roll



Order Ref.	Width (mm)	Colour	
Reflective Solid Colour Tape			
078989	50.00	Orange	
078990	75.00	Orange	
078985	50.00	White	
078987	75.00	White	
078986	50.00	Yellow	
078988	75.00	Yellow	

Order Ref.	Width (mm)	Colour	
Reflective Stripes Tape			
076310	50.00	Black & White	
076309	50.00	Red & White	
076313	75.00	Red & White	
076308	50.00	Black & Yellow	
076312	75.00	Black & Yellow	



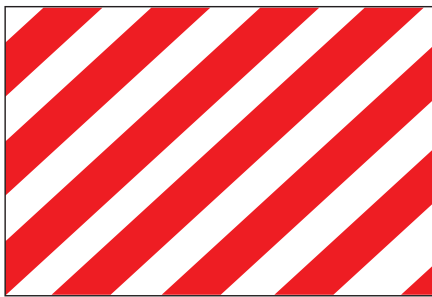
Permanent Area Marking Tape & Floor Marking Paint



AISLE MARKING TAPES

- Long lasting, sticks fast to surfaces
- Material: Self-adhesive Vinyl (B-726)
- Length: 33 m
- Packaging: 1

Order Ref.	Width (mm)	Colour	
058200	50.00	Yellow	
058250	75.00	Yellow	
058203	50.00	White	
058253	75.00	White	
058201	50.00	Red	
058251	75.00	Red	
058202	50.00	Green	
058252	75.00	Green	
058220	50.00	Blue	
058221	75.00	Blue	
058222	50.00	Black	
058223	75.00	Black	



WARNING PANELS

CAN BE USED WHEREVER THERE ARE POTENTIAL DANGERS TO THE WORK FORCE.

Designed to give early warning about trucks, loading platforms, posts and fork-lift trucks.

- Material: Self-adhesive Vinyl (B-946)

Order Ref.	Height (mm) x Width (mm)	Colour	Packaging
255322	286.00 x 428.00	Red & White	10



EASYLINE™ FLOOR MARKING PAINT FOR INDUSTRIAL MARKING

- For permanent use
- Supplied in 750 ml aerosol cans which are CFC free
- Does not contain lead or chlorinated solvents
- Produces lines up to 100 metres long, depending on the surface and the width
- Resistant to oil, petrol, grease, water, etc
- Packaging: Sold in packs of 6

Order Ref.	Colour	Description
225005	Blue	Permanent Easyline Paint - Blue
225006	Green	Permanent Easyline Paint - Green
225007	Orange	Permanent Easyline Paint - Orange
225008	Black	Permanent Easyline Paint - Black
225009	Grey	Permanent Easyline Paint - Grey
255353	Yellow	Permanent Easyline Paint - Yellow
255354	White	Permanent Easyline Paint - White
255355	Red	Permanent Easyline Paint - Red



EASYLINE™ EDGE PAINT APPLICATOR

Easy to use wheeled Easyline™ Line Marking Paint applicator. Mark 3 different line widths, 50 mm, 75mm & 100 mm with one machine. Ensures clean, precise lines. Total visibility of line marking during application. Rear wheels are adjustable to allow for line marking close to walls and racks.

Order Ref.	Description
255351	Easyline™ Edge Paint Applicator



Brady offers a wide range of photoluminescent products. These indicate danger zones, even in complete darkness. In case of an emergency, these products will help your employees to find their way out of a dark room.

mcd = Millicandela

Minimum Luminance

Class	After 10 minutes	After 60 minutes
A	23 mcd/m ²	3 mcd/m ²
B	50 mcd/m ²	7 mcd/m ²
C	140 mcd/m ²	20 mcd/m ²
D	260 mcd/m ²	35 mcd/m ²

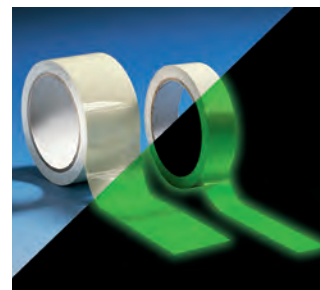


GLOW-IN-THE-DARK WARNING TAPES

- Material: Self-adhesive photoluminescent polyester

Order Ref.	Width (mm)	Length (m)	Class
224071	25.00	9.00 m	Class A
224072	50.00	9.00 m	Class A
836794	20.00	10.00 m	Class B
836795	40.00	10.00 m	Class B
836796	50.00	10.00 m	Class B
836797	80.00	10.00 m	Class B
836798	50.00	10.00 m	Class C
836802	50.00	1.00 m	Class B
836803	50.00	1.00 m	Class C

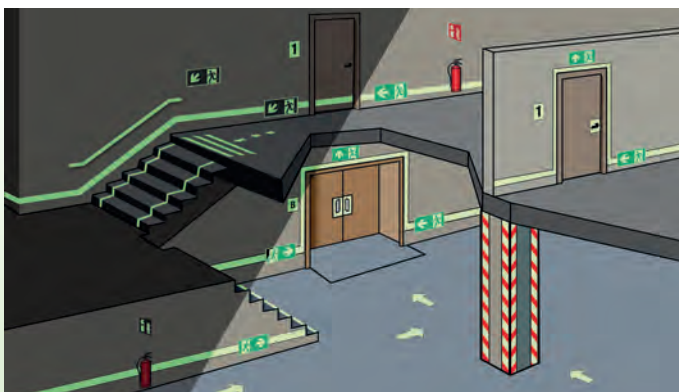
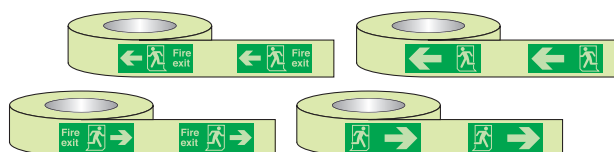
Note: article numbers 836802 and 836803 are rigid strips



GLOW-IN-THE-DARK WARNING TAPES WITH LEGEND

- Material: Self-adhesive photoluminescent polyester
- Standard Package: 1 roll (10 m)

Order Ref.	Width (mm)	Description	Legend	Class
836788	40.00	Emergency exit (left)	—	Class B
836793	40.00	Emergency exit (left)	Fire exit	Class B
836789	80.00	Emergency exit (left)	—	Class B
836792	80.00	Emergency exit (left)	Fire exit	Class B
836790	40.00	Emergency exit (right)	—	Class B
836786	40.00	Emergency exit (right)	Fire exit	Class B
836791	80.00	Emergency exit (right)	—	Class B
836787	80.00	Emergency exit (right)	Fire exit	Class B



SAFETY SIGNAGE

Contact your Brady distributor for the Safety Signage catalogue.

Photoluminescent Area Marking

Minimum Luminance		
Class	After 10 minutes	After 60 minutes
A	23 mcd/m ²	3 mcd/m ²
B	50 mcd/m ²	7 mcd/m ²
C	140 mcd/m ²	20 mcd/m ²
D	260 mcd/m ²	35 mcd/m ²

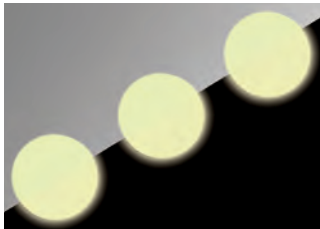
mcd = Millicandela



GLOW-IN-THE-DARK ANTI-SKID FOOTPRINTS

- Material: Photoluminescent self-adhesive with anti-skid effect

Article No.	Height (mm) x Width (mm)	Description	Packaging	Class
224073	210.00 x 85.00	Glow-in-the-dark anti-skid footprint - Right foot	1	Class A
224074	210.00 x 85.00	Glow-in-the-dark anti-skid footprint - Left foot	1	Class A
836824	90.00 x 40.00	Glow-in-the-dark Footprints	20	Class B



GLOW-IN-THE-DARK ANTI-SKID FLOOR MARKING DOTS

- Material: Photoluminescent self-adhesive with anti-skid effect

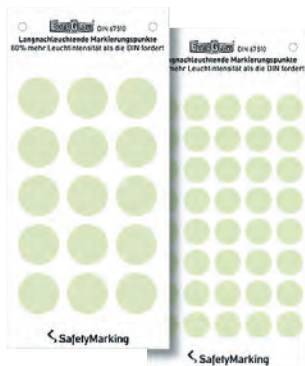
Article No.	Diameter (mm)	Description	Packaging	Class
224077	50.00	Glow-in-the-dark anti-skid floor marking dots	10	Class A
836823	75.00	Glow-in-the-dark Shapes	20	Class B



DOOR HANDLE BACKGROUNDS

- Material: Photoluminescent Polyester (B-324)

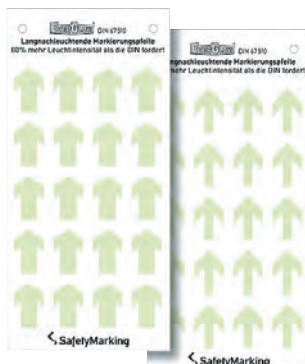
Article No.	Height (mm) x Width (mm)	Description	Packaging	Class
224075	255.00 x 100.00	Door handle background - Left turn	1	Class A
224076	255.00 x 100.00	Door handle background - Right turn	1	Class A



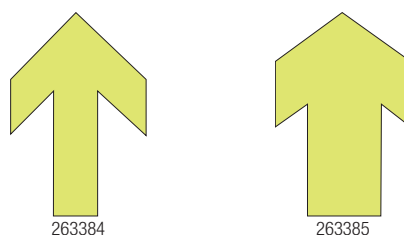
PHOTOLUMINESCENT INDIVIDUAL DOTS (SELF-ADHESIVE)



Article No.	Diameter (mm)	Description	Packaging	Class
263382	16.00	Photoluminescent individual dots (Self-adhesive)	40	Class A
263383	25.00	Photoluminescent individual dots (Self-adhesive)	15	Class A



PHOTOLUMINESCENT INDIVIDUAL ARROWS (SELF-ADHESIVE)



Article No.	Height (mm) x Width (mm)	Description	Packaging	Class
263384	18.00 x 27.00	Photoluminescent individual arrows - Narrow	20	Class A
263385	18.00 x 27.00	Photoluminescent individual arrows - Wide	20	Class A

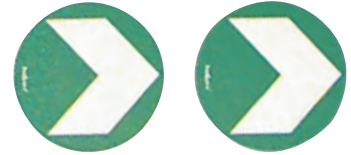
Minimum Luminance		
Class	After 10 minutes	After 60 minutes
A	23 mcd/m ²	3 mcd/m ²
B	50 mcd/m ²	7 mcd/m ²
C	140 mcd/m ²	20 mcd/m ²
D	260 mcd/m ²	35 mcd/m ²

mcd = Millicandela

Photoluminescent Area Marking

PHOTOLUMINESCENT FLOOR MARKING ARROWS (SELF-ADHESIVE)

Article No.	Diameter (mm)	Description	Packaging	Class
263387	95.00	Photoluminescent Floor Marking Arrows (self-adhesive)	10	Class A



PHOTOLUMINESCENT ARROWS – RECTANGULAR (SELF-ADHESIVE)

Article No.	Height (mm) x Width (mm)	Description	Packaging	Class
251920	175.00 x 110.00	Photoluminescent arrow with anti-skid top - Rectangular	10	Class A



ANTI-SKID PHOTOLUMINESCENT L-SHAPE

THESE PRE-CUT “L”-SHAPED MARKERS HAVE AN ANTI-SKID COATING AND INDICATE CLEARLY THE EDGES OF STAIRS IN THE DARK.

Article No.	Height (mm) x Width (mm)	Description	Packaging	Class
836799	75.00 x 25.00	Glow-in-the-dark Warning Tape	200	Class C



PHOTOLUMINESCENT LIGHT SWITCH MARKERS

SMALL SHAPES TO PUT ON SWITCH FOR EASY AND QUICK ACCESS. SIMPLY STICK THESE MARKERS ONTO YOUR LIGHT SWITCHES FOR EASY LOCATION IN THE DARK.

Article No.	Height (mm) x Width (mm)	Description	Packaging	Class
836825	8.00 x 15.00	Glow-in-the-dark Shapes	80	Class B



GLOW-STICKS

TRANSLUCENT PLASTIC TUBE CONTAINING SUBSTANCE MAKING LIGHT THROUGH CHEMILUMINESCENCE. 12 HOURS LIGHT SOURCE WITHOUT ANY EXTERNAL ENERGY SOURCE. THE LIGHT CANNOT BE TURNED OFF AND CAN BE USED ONLY ONCE.

Article No.	Height (mm)	Colour	Description	Packaging
836826	150.00	Photoluminescent	Glow-in-the-dark Accessories	10

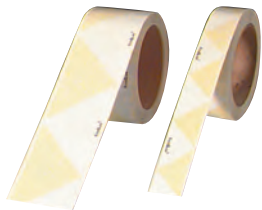
Note: Glow-sticks are photoluminescent yellow. Other colours available on request.

WARNING TAPE: STANDARD LUMINOUS INTENSITY



Article No.	Colour	Width (mm)	Length (m)	Packaging	Class
836813	Black/Photoluminescent	40.00	10.00 m	1	Class B
836814	Black/Photoluminescent	80.00	10.00 m	1	Class B
836817	Green/Photoluminescent	40.00	10.00 m	1	Class B
836818	Green/Photoluminescent	80.00	10.00 m	1	Class B
836819	Red/Photoluminescent	40.00	10.00 m	1	Class B
836820	Red/Photoluminescent	80.00	10.00 m	1	Class B
Striped Left					
263367	Red/Photoluminescent	30.00	12.00 m	1	Class A

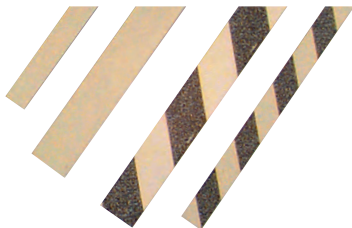
PHOTOLUMINESCENT DOOR MARKING TAPE



Article No.	Width (mm)	Length (m)	Packaging	Class
263379	30.00	25.00 m	1	Class B
263381	60.00	25.00 m	1	Class B

PHOTOLUMINESCENT ANTI-SKID STRIPS

THESE SELF-ADHESIVE ALUMINIUM ANTI-SKID STRIPS ARE IDEAL FOR MARKING THE EDGES OF STAIRS AND DOORWAYS. THEY ARE AVAILABLE IN A STANDARD LUMINOUS INTENSITY VERSION AND A HIGH LUMINOUS INTENSITY VERSION.

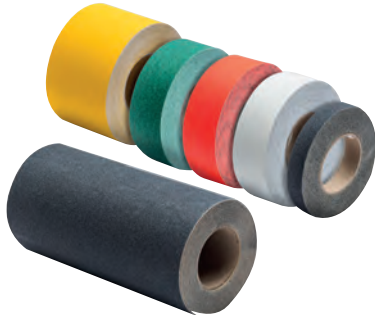


Article No.	Colour	Width (mm)	Length (m)	Packaging	Class
Photoluminescent Anti-skid Strips - Aluminium High intensity / Striped					
251930	Black/Photoluminescent	30.00	0.80 m	1	Class C
251932	Black/Photoluminescent	50.00	0.80 m	1	Class C
Photoluminescent Anti-skid Strips - Aluminium High intensity					
251926	Photoluminescent	30.00	0.80 m	1	Class C
251928	Photoluminescent	50.00	0.80 m	1	Class C
Photoluminescent Anti-skid Strips - Aluminium Standard intensity					
251925	Photoluminescent	30.00	0.80 m	1	Class B

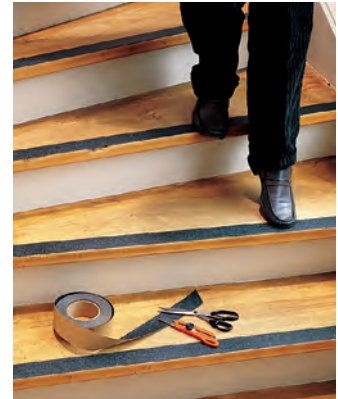
ROLL-MOUNTED ANTI-SKID TAPE

ANTI-SKID TAPE HELPS TO PREVENT SLIPPING AND FALLING ON WET OR SLIPPERY FLOORS. THE RUGGED POYESTER TAPE IS ADHESIVE BACKED AND COATED WITH THOUSANDS OF PARTICLES OF DURABLE ALUMINIUM OXIDE GRIT.

- Bonds permanently to clean, dry floors
- Works indoors or outdoors
- Withstands grease and oil
- Eliminates masking clean-up and drying time



Order Ref.	Colour	Length (m)	Packaging
Tape Width 25.00 mm			
078189	Black	18.00 m	1
Tape Width 50.00 mm			
078190	Black	18.00 m	1
078188	Clear	18.00 m	1
078182	Green	18.00 m	1
078184	Orange	18.00 m	1
078198	Red	18.00 m	1
078187	White	18.00 m	1
078183	Yellow	18.00 m	1
Tape Width 100.00 mm			
078191	Black	18.00 m	1
078199	Red	18.00 m	1
078092	Yellow	18.00 m	1
Tape Width 150.00 mm			
078193	Black	18.00 m	1
Tape Width 300.00			
078194	Black	18.00 m	1

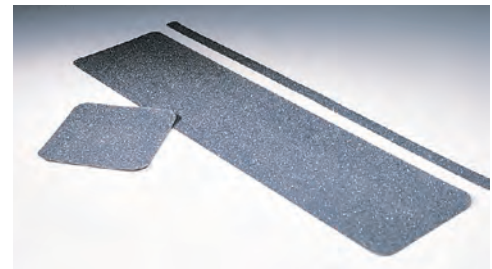


ANTI-SKID TAPE DIE-CUT CLEATS

INSTALLATION IS EASY, JUST PEEL OFF THE PROTECTIVE LINER AND PRESS IN PLACE.

- Material: Adhesive backed plastic cleat

Order Ref.	Colour	Height (mm) x Width (mm)	Packaging
078177	Red	140.00 x 140.00	50
078196	Black	140.00 x 140.00	50
078192	Black	19.00 x 600.00	50
078195	Black	150.00 x 600.00	50



ANTI-SKID REFLECTIVE & GLOW-IN-THE-DARK DIE-CUT CLEATS

PROVIDES AN EXTRA MARGIN OF SAFETY AT NIGHT, DURING BLACKOUTS OR IN LOW LIGHT CONDITIONS.

Order Ref.	Description	Height (mm) x Width (mm)	Packaging
078162	Glow-in-the-Dark Die-Cut Cleats - Black	150.00 x 600.00	24



ANTI-SKID TAPE/HAZARD MARKING DIE-CUT CLEATS

THE ANTI-SKID TAPE PROVIDES TRACTION ON SLICK FLOORS, WHILE THE PRINTED MESSAGE SIGNALS A VISUAL WARNING.

Order Ref.	Height (mm) x Width (mm)	Legend	Packaging
078160	152.40 x 609.60	Caution	24
078163	152.40 x 609.60	Watch your step	24



STRIPED ANTI-SKID TAPE

THIS BRIGHT YELLOW AND BLACK STRIPED ANTI-SKID TAPE AIDS VISIBILITY.

- Material: Adhesive backed plastic tape, oxide grit coated
- Colour: Black & Yellow

Order Ref.	Width (mm)	Length (m)	Packaging
078146	25.00	18.00 m	1
078147	50.00	18.00 m	1
078148	75.00	18.00 m	1
078149	100.00	18.00 m	1
078150	150.00	18.00 m	1





BARRICADE TAPES

VISUAL BARRICADING PROVIDES FAST ON-THE-SPOT WARNING OF POTENTIAL DANGERS.

The non-adhesive tape can be used for temporary outdoor or permanent indoor applications. This tape can be tied, stapled or nailed to posts, fences or metal barricades.

- Material: Polyethylene
- Thickness: 0.075 mm
- Size: 75.00 mm x 250 m
- Packaging: 1 roll

Order Ref.	Legend
------------	--------



256654



256660

Order Ref.	Legend
------------	--------



256858



256860

Striped Barricade Tape

- Thickness: 0.03 mm
- Size: 75.00 mm x 500 m

Order Ref.	Colour
------------	--------



291425



291426



Custom products available on request:

- Standard dimensions: 50mm x 250m and 75mm x 250m
- Background colours: Green, Orange, Red, Yellow, Blue, White
- Print of text and/or logo
- From 24 rolls



SUPER-STRONG BARRICADE TAPE

LONG-LASTING HAZARD PROTECTION, EVEN WITH LONG DISTANCES BETWEEN TIE POINTS.

Reinforced Barricade Tape is stronger than ordinary barricade tape, making long stretches between tie points easy. No stretch or sag in sunlight or wind and it's tough enough to be used again.

- Width: 75.00 mm
- Length: 100 m
- Packaging: 1 roll

Order Ref.	Legend
------------	--------

091104



256868



Custom products available on request:

- Standard dimensions: 50mm x 250m and 75mm x 250m
- Background colours: Green, Orange, Red, Yellow, Blue, White
- Print of text and/or logo
- From 24 rolls

UNDERGROUND WARNING TAPE

UNDERGROUND TAPE IS BURIED 30 TO 45 CM BELOW GROUND LEVEL. DIGGING CREWS RECEIVE WARNING OF BURIED LINES AND CABLES, ALLOWING A MARGIN OF SAFETY BETWEEN THE TAPE AND THE BURIED LINE.

- Available in 2 versions: detectable and undetectable
- Easily Seen
- Easily Identified - by means of colour coding
- Convenient - Handy dispensing reel
- Strong - Heavy duty polyethylene material resists acid, alkalis and other soil substances.
- Long Lasting - Coated graphics provide long lasting legibility and hold colour values
- Economical - Compared to the potential cost of line damage, this tape is cost-effective for use over the entire length of the line
- Standard dimensions: 75mm x 250m and 150mm x 250m
- Minimum order quantity: 50 rolls of 75mm x 250m or 25 rolls of 150mm x 250m
- Black print on any background colour

Contact us to get an offer for your project.



DID YOU KNOW? - METALPHOTO® PHOTSENSITIVE ANODISED ALUMINIUM

MetalPhoto® is the leading material for durable, long-lasting barcode labels, asset tags and variable information plates.

Made of photosensitive anodised aluminium, these reliable custom tags and labels are designed to work with your specific asset tracking system and remain readable for more than 30 years outdoors.

MetalPhoto® can be used for the identification of underground lines and cables.



Anodic Layer

The glass-clear, sapphire-hard anodized layer resists chemicals, paint, abrasion and dirt.

Sealed Image

Black graphics are metallic silver particles that hold up to extreme heat and sunlight exposure.

Aluminum Layer

The rigid aluminum base will not peel, crack or delaminate.

Warning Posts & Chains

BRADYLINK® WARNING POST & CHAIN

BARRICADE POTENTIALLY HAZARDOUS AREAS INDOORS OR OUTDOORS WITH PORTABLE PLASTIC POSTS AND CHAINS. THEIR LIGHTWEIGHT YET TOUGH CONSTRUCTION STANDS UP TO YEARS OF USE IN TEMPORARY OR PERMANENT APPLICATIONS.



The components of the posts and chains are made of polyethylene with the following features:

- Built-in Ultraviolet Inhibitors: Screen out the sun's rays to prevent colours from fading during outdoor use
- Light-weight: chain is lighter than similar metal parts – chain weights 2.7 kg per 25 metres
- Non-rusting: Unlike metal posts and chain BradyLink, plastic parts cannot rust
- Fillable Base: Hollow base can be filled with water or sand for more stable application
- C-hook: Large C-hook holds chain in place. Use open, or closed for greater security
- Post Diameter: 75.00 mm
- Base Diameter: 400.00 mm
- Height: 1040.00 mm

Order Ref.	Colour	Packaging
092123	Striped Black & Yellow	6
092125	Striped Black & Yellow Reflective	6



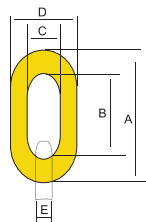
Insert post into base and turn into place. Base may be filled with sand or water to make the assembly more stable.



Drop C-hook into slots, insert post to, and screw into place. Large C-hook holds chain in place.

BRADY WARNING CHAIN

- Material: Polyethylene
- Standard Package: 25 m (2.7 kg)



Dimensions

A: 50.00 mm
B: 34.00 mm
C: 12.00 mm
D: 28.00 mm
E: 8.00 mm

Order Ref.	Width (mm)	Height (mm)	Colour
278271	28.00	50.00	Yellow
278268	28.00	50.00	White
278269	28.00	50.00	Red & White
278270	28.00	50.00	Black & Yellow

BRADY CONNECTING HOOKS



- Material: Moulded Polyethylene
- Packaging: 36
- Usage: attaching lengths of chains

Order Ref.	Width (mm)	Colour
078257	50.00	Yellow
078258	50.00	White
078259	50.00	Black

BRADY CONNECTING LINKS



- Material: Moulded Polyethylene
- Packaging: 36
- Usage: for a more permanent application or repairing chain links, these connecting links can be used

Order Ref.	Width (mm)	Colour
078248	50.00	Black
078247	50.00	White
078246	50.00	Yellow

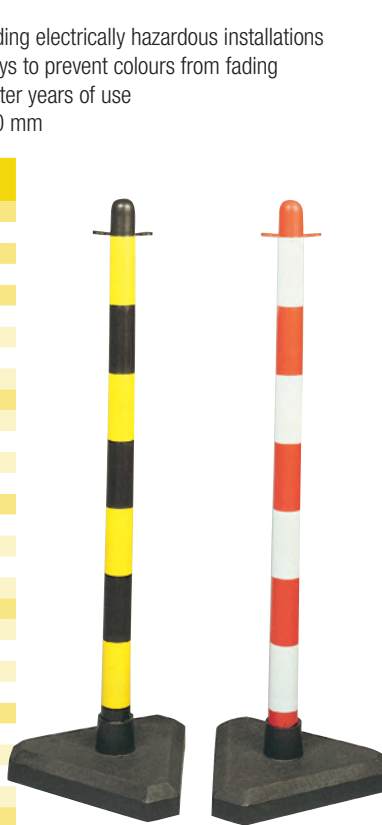
WARNING POSTS

IDEAL FOR CONTROLLING AND DIRECTING FOOT TRAFFIC. SUITABLE FOR WAREHOUSES, FACTORIES, OFFICES, ETC.

Chains and ribbons can be attached to the sturdy 90 cm high posts. The posts are available in one-colour or two-colour versions (stripes of 10 cm wide).

- Material: polyethylene
- Non-conductive: the posts can be used for barricading electrically hazardous installations
- Built-in ultraviolet inhibitors: block out ultraviolet rays to prevent colours from fading
- Colours: they stay bright and eye-catching, even after years of use
- Sizes: height: 900.00 mm, outside diameter: 40.00 mm

Article No.	Colour	Height (mm)	Quantity / Package
Triangular plastic base only (empty - no cement) (29 x 9 cm)			
292245	Black		1
Rubber base only (27 x 5 cm)			
256728	Black		1
Post & triangular plastic base (no cement)			
292240	Black & Yellow	900.00	4
292233	Red	900.00	4
292238	Red & White	900.00	4
292235	White	900.00	4
Post & top (no base)			
292241	Black & Yellow	900.00	1
292244	Red	900.00	1
292242	Red & White	900.00	1
292243	White	900.00	1
Post & rubber base (1,6 kg)			
256724	Black & Yellow	900.00	4
256730	Red	900.00	4
256723	Red & White	900.00	4
256726	White	900.00	4
Post & fillable base (3,7 l)			
256722	Black & Yellow	900.00	4
256729	Red	900.00	4
256721	Red & White	900.00	4
256725	White	900.00	4
Post & cement base (3,5 kg)			
292236	Black & Yellow	900.00	4
292234	Red	900.00	4
292237	Red & White	900.00	4
292239	White	900.00	4
Fillable base only (25 x 6 cm)			
256727	Black		1
Cement base only (29 x 9 cm)			
292246	Black		1
BradyPost Top			
292247	Black		1
292248	Red		1
292249	White		1



Triangular plastic or cement base



Fillable base



Rubber base

MESSAGE SIGN

CREATE AN EVEN SAFER WORK ENVIRONMENT BY USING THESE UNIVERSAL SIGNS. THE PLASTIC FRAME SIMPLY CLIPS TO THE BRADY POSTS.

- Kit contains: frame + 2 attachment clips + 1 chain (black, 20 cm)
- Colour: black
- Packaging: 1
- Signs not included in kit

Order Ref.	Width (mm)	Height (mm)	Description
292250	210.00	297.00	Message Sign Kit A4



HEAVY DUTY FLOOR STANDS

EASILY TRANSPORTABLE, THESE STANDS ARE VERY USEFUL TO CARRY WITH AND CLEARLY INDICATE SUBSTANTIAL DANGERS SUCH AS SLIPPERY ZONES. THEY ARE IDEAL FOR HOSPITALS OR PUBLIC HALLS FOR EXAMPLE.

- Heavy duty yellow high density polypropylene
- Height (closed): 660.00 mm
- Maintenance free : will not dent or corrode
- Large message area is visible from over 9 metres
- Available with a range of standard messages or as a blank stand



Order Reference				
092110	256700	256701	256702	256704



Order Reference			
256705	256706	256708	256709

ECONOMY FLOOR STANDS

- Printed on both sides –inside and out- offering two stands for the price of one
- Lightweight corrugated polypropylene material
- Packaging: 1 piece
- Height (closed): 500.00 mm - Width: 300.00 mm

BRADY
Customise-it

Contact your Brady Specialist for more information on customised Floor Stands



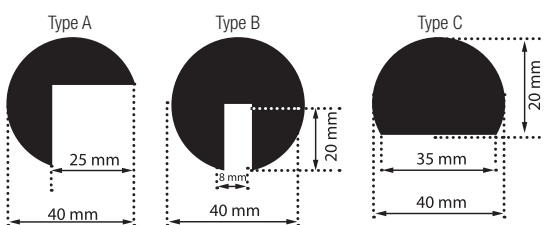
Order Reference		
092284	256711	256712

POLYURETHANE SAFETY BUMPERS

Clearly visible, made from polyurethane foam rubber, flexible and sturdy material, optimal shock-absorber.

- 4 colours: black; yellow on black; photoluminescent on black
- 3 models available + 2 corner connecting pieces
- The photoluminescent strips are coated with a film that protects against physical and chemical actions. In the dark, these products give off the light they have absorbed during the day
- Non-toxic and non-radioactive
- Length: 1m.
- Secured with adhesive
- Packaging: 1

Order Ref.	Type	Colour	Packaging
225011	Type A	Black & Yellow	1
225012	Type A	Black/Photoluminescent	1
225015	Type B	Black & Yellow	1
225018	Type C	Black & Yellow	1
225019	Type C	Black/Photoluminescent	1
225020	2-dimensional corner piece	Black	1



2-dimensional corner piece



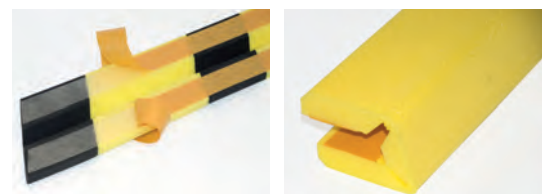
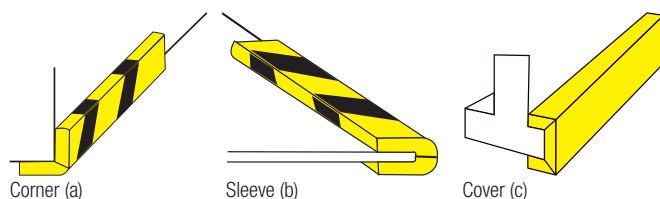
SELF-ADHESIVE SAFETY BUMPERS

Protect corners and edges with these shock-absorbers.

- Shock-absorber made from cellular thermoplastic
- Dual function: indicates hazardous situations and softens any impacts
- Increases safety in the workplace
- Highly resistant against hydrocarbons
- Double-sided adhesive, can be attached to any clean surface
- Choice out of 3 models
- Packaging: 10

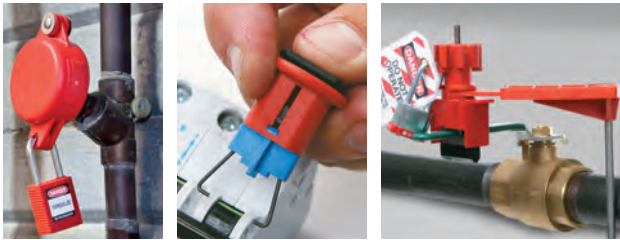
Order Ref.	Type	Height (mm)	Length (m)	Colour	Packaging
225022	Corner (a)	110.00	0.68 m	Black & Yellow	10
225023 *	Sleeve (b)	28.00	0.66 m	Black & Yellow	10
225024	Cover (c)	151.00	0.75 m	Yellow	10

* not adhesive



BRADY - YOUR COMPLETE WORK SAFETY SOLUTION PROVIDER

Find out more safety products from our extensive portfolio. Visit our websites or contact your nearest Brady representative.



LOCKOUT/TAGOUT - SOLUTIONS FOR HAZARDOUS ENERGY CONTROL

From audit and identification of energy control points, through procedure creation and the selection of adequate products, up to employee training and safety awareness promotion – Brady offers full support and a broad range of products to create your advanced work safety environment.



VISUAL TAGGING SOLUTIONS SAFETY. MAINTENANCE. IDENTIFICATION.

Provide essential records of the safe condition of all your site equipment and scaffolding.

- Simple to implement
- Easy for workers to understand
- Specially designed for rough environments
- Highly visible



PIPE MARKERS - EASILY IDENTIFY PIPE CONTENT AND FLOW DIRECTION

The correct identification of pipes ensures a better insight into a building's structure. Accidents, injuries and damage can be prevented.



SORBENTS - SMART SPILL CONTROL

Clean, fast and safe removal of oil, water and chemicals spills.

- Adsorbs 10-25 times its own weight within a few seconds
- Environmentally friendly
- Spend less time cleaning



WHEN PERFORMANCE MATTERS MOST™

BRADY Africa

361 Olympic Duel,
Northlands Business Park
Newmarket Road
Randburg
Tel: +27 11 704 3295
Fax: +27 86 501 7775

BRADY Benelux

Industriepark C/3
Lindestraat 20
9240 Zele, Belgium
Tel. +32 (0) 52 45 78 11
Fax +32 (0) 52 45 78 12

BRADY Central & Eastern Europe

Na Pántoch 18
831 06 Bratislava, Slovakia
Tel. +421 2 3300 4800
Fax +421 2 3300 4801

BRADY Denmark

Svendborgvej 39D
5260 Odense S
Tel. +45 66 14 44 00
Fax +45 66 14 44 50

BRADY France

Parc EURO CIT
45, avenue de l'Europe
59436 Roncq Cedex
Tel. +33 (0) 3 20 01 08 70
Fax +33 (0) 3 20 01 08 76

BRADY Germany

Brady-Straße 1
63329 Egelsbach
Tel. +49 (0) 6103 7598 660
Fax +49 (0) 6103 7598 670

BRADY Hungary

Puskás Tivadar u. 4.
2040 Budaörs
Tel. +36 23 500 275
Fax +36 23 500 276

BRADY Italy

Via Degli Abeti 44
20064 Gorgonzola (MI)
Tel: +39 02 26 00 00 22
Fax: +39 02 25 75 351

BRADY Middle East FZE

PO BOX 18015
Jebel Ali, Dubai, UAE
Tel. +971 4881 2524
Fax +971 4881 3183

BRADY Norway

Kjeller Vest 2
2007 Kjeller
Tel. +47 70 13 40 00
Fax +47 70 13 40 01

BRADY Romania

World Trade Center
Piata Montreal, nr 10
Intrarea F, Etajul 1, Birou 1.16,
Sector 1,
Bucharest, 011469
Tel: +40 21 202 3032
Fax: +40 21 202 3100

BRADY Russia

Turgenevskaya Square
building 2, office 402
101000 Moscow
Tel: +7 495 225 93 62

BRADY Spain & Portugal

Av. Ventisquero de la condesa 13,
local 17 y 18
28035 Madrid, Spain
Tel. +34 900 902 993
Fax +34 900 902 994

BRADY Sweden

Norgegatan 2
164 32 Kista
Tel. +46 (0) 8 590 057 30
Fax +46 (0) 8 590 818 68

BRADY Turkey

Konaklar Mah. Selvili Sokak
C13 Blok No.8 Kat:3 Daire:5
34330 4.Levent-Besiktas
Istanbul
Tel. +90 212 264 02 20 / 264 02 21
Fax +90 212 270 83 19

BRADY UK & Ireland

Wildmere Industrial Estate
Banbury, Oxon – OX16 3JU, UK
Tel. +44 (0) 1295 228 288
Fax +44 (0) 1295 228 219

BRADY WORLDWIDE

Australia	612-8717-6300
Brazil	55-11-3686-4720
Canada	1-800-263-6179
China (Beijing)	86-10-6788-7799
China (Shanghai)	86-21-6886-3666
China (Wuxi)	86-510-528-2222
Hong Kong	852-2359-3149
Japan	81-45-461-3600
Korea	82-31-451-6600
Latin America	1-414-540-5560
Malaysia	60-4-646-2700
Mexico	525-399-6963
New Zealand	61-2-8717-2200
Philippines	63-2-658-2077
Singapore	65-6477-7261
Taiwan	886-3-327-7788
Thailand	66-2-793-9200
USA	1-800-537-8791

Your distributor

EUR-M-423-ENb 06/06/2016



Y3369027

© 2016 Brady Worldwide, Inc. All Rights Reserved.